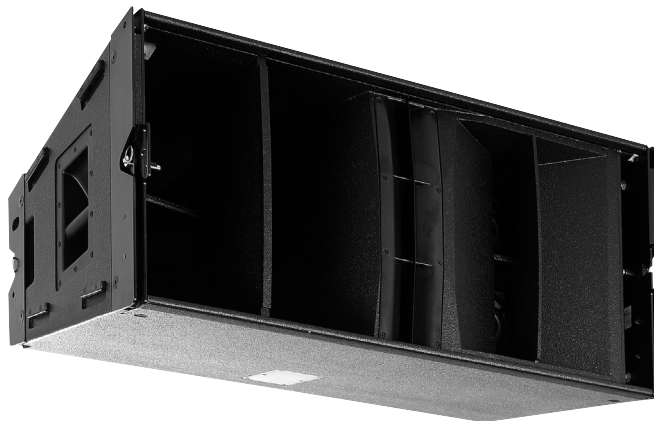


W8LCD

Compact, Vertically Arrayable Three-Way Enclosure

features

- ▶ Stand-alone vertically arrayable enclosure
- ▶ Line array downfill element
- ▶ Consistent 120° (-6dB) horizontal mid and HF pattern control
- ▶ 20° (-6dB) vertical dispersion
- ▶ Amplitude shading switch
- ▶ Fast, integral rigging system, compatible with W8LC, flying frame and lifting bar
- ▶ 7:1 safety factor with arrays of up to 6 cabinets
- ▶ ViewPoint™ array optimisation software
- ▶ Loudspeaker management preset files for a wide variety of configurations
- ▶ Compatible with WLX, WSXa and WS218X



applications

- ▶ Short to medium throw (<40m) arrays of 1 to 4 cabinets
- ▶ Vertically arrayed downfill for W8LC systems
- ▶ Theatre Sound Reinforcement
- ▶ Live Sound Reinforcement
- ▶ Corporate Events
- ▶ Fixed Installations

The Martin Audio W8LCD is a compact, wide dispersion, vertically arrayable enclosure. It can be used individually and in small quantities for short to medium throw (<40m) applications as well as a downfill element for the W8LC. Its 20° vertical dispersion requires fewer cabinets to cover the same area as a conventional line array element, yet it still benefits from the smooth, predictable coverage of a vertically coupled system.

Using one or two W8LCD cabinets at the bottom of a W8LC array benefits the whole system. The W8LC array becomes less curved and throws further and the W8LCD's 120° dispersion is now covering 'front row central' and the extreme front left and right. Configuring the system in this way requires 2x3 processor channels and three amplifiers to drive up to four cabinets, two per left and right column. It is also possible to adapt the six-way controller settings used with W8LC arrays to incorporate the drive required by the W8LCD.

As a stand-alone enclosure, the W8LCD is effective in arrays of 1 to 4 cabinets when used over short to medium (<40m) distances and coverage areas that require a large vertical angle. To optimise SPL from the front to the rear of the coverage area, the W8LCD is fitted with a rear mounted amplitude shading

switch. This boosts output from the top of the array where throw distance is typically greatest and cuts output from the bottom of the array where cabinets may be close to the front of the audience.

The W8LCD is a full-bandwidth system (-3dB @ 60Hz) and may be used without subwoofers in many applications. Where additional low frequency extension is required, it is ideally complimented by the WLX subwoofer from which the W8LCD can be flown or ground stacked. It can also be used with the other Wavefront series subs such as the WSXa, W8LS and WS218X

Constant directivity (in the horizontal plane) horns are used for high and mid frequencies, ensuring consistent on and off axis performance. The high frequency horn generates the correct vertical wavefront curvature to provide optimum inter-cabinet summation and to seamlessly integrate with W8LC arrays. Extreme high frequency output is maintained right out to the edges of the 120° coverage pattern thanks to the patent pending HiBlade device. The mid horn features our patented (US6950530) toriodal phase bung and generates the vertical low curvature wavefront essential for optimum inter-cabinet summation.

touring and theatre



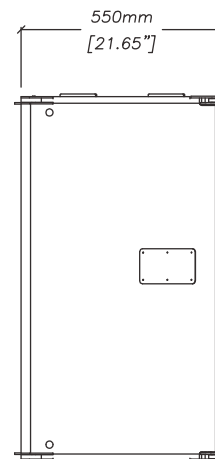
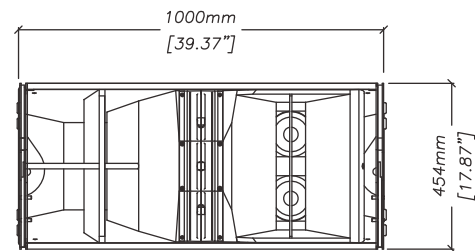
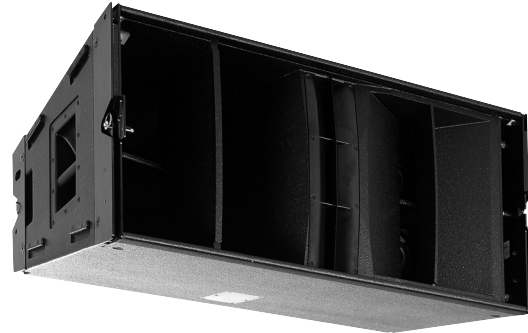
www.martin-audio.com

W8LCD

Compact, Vertically Arrayable Three-Way Enclosure

technical specifications

TYPE	Three-way, compact, downfill line array element
FREQUENCY RESPONSE (5)	60Hz-18kHz \pm 3dB -10dB @45Hz
DRIVERS	12" (300mm)/4" (100mm) voice coil, neodymium, Hybrid® bass horn loaded 2 x 6.5" (165mm)/1.5" (37.5mm) coil drivers, horn loaded 3 x 1" (25mm) exit HF compression drivers, horn loaded
RATED POWER (2)	LF: 1000W AES, 4000W peak MF: 200W AES, 800W peak HF: 100W AES, 400W peak
RECOMMENDED AMPLIFIER	MA12K
SENSITIVITY (6)	LF: 103dB MF: 106dB HF: 109dB
MAXIMUM SPL (calculated @ 1m)	LF: 133dB continuous, 139dB peak MF: 129dB continuous, 135dB peak HF: 129dB continuous, 135dB peak
NOMINAL IMPEDANCE	LF: 8 ohms MF: 8 ohms HF: 8 ohms
DISPERSION (-6dB)	120° horizontal 140° horizontal @ -10dB 20° vertical
CROSSOVER	300Hz, 3kHz active via DX1.5 or DX2 controller
ENCLOSURE	Vertical trapezoid with 10° wall angle, multi-laminate birch ply construction
FINISH	Textured black paint
PROTECTIVE GRILLE	Black perforated steel
CONNECTORS	2 x Neutrik NL8
FITTINGS	Proprietary rigging system 2 x bar handles and 2 x pocket handles Side mounted interlocking skids
DIMENSIONS (inc. wheelboard)	(W) 1000mm x (H) 454mm x (D) 550mm (706mm) (W) 39.4ins x (H) 17.9ins x (D) 21.7ins (27.8ins)
WEIGHT (ex. wheelboard)	67kg (148lbs)



W8LCD

Notes

- (1) Measured on-axis in half space at 2 metres, then referred to 1 metre.
- (2) AES Standard ANSI S4.26-1984.
- (3) Measured in half space at 2 metres with 1 watt input, using band limited pink noise, then referred to 1 metre.
- (4) Measured in half space at 2 metres using band limited pink noise, then referred to 1 metre.
- (5) Measured on-axis in open (4π) space at 2 metres, then referred to 1 metre.
- (6) Measured in open (4π) space at 2 metres with 1 watt input, using band limited pink noise, then referred to 1 metre.
- (7) Measured in open (4π) space at 2 metres using band limited pink noise, then referred to 1 metre.

Trade Descriptions Act

Due to Martin Audio's policy of continuing improvement, we reserve the right to alter these specifications without prior notice. Martin Audio is committed to refining state of the art sound reinforcement, combining in-depth product and field applications research with advanced manufacturing techniques. Every Martin Audio product is built to the highest manufacturing standards and rigorously tested to ensure that it meets the performance criteria specified in the design.

touring and theatre

Century Point, Halifax Road, Cressex Business Park,
High Wycombe, Buckinghamshire HP12 3SL, England.
Telephone: +44 (0)1494 535312 Facsimile: +44 (0)1494 438669
E-mail: info@martin-audio.com
All information is Copyright © 2011 Martin Audio Ltd.



www.martin-audio.com