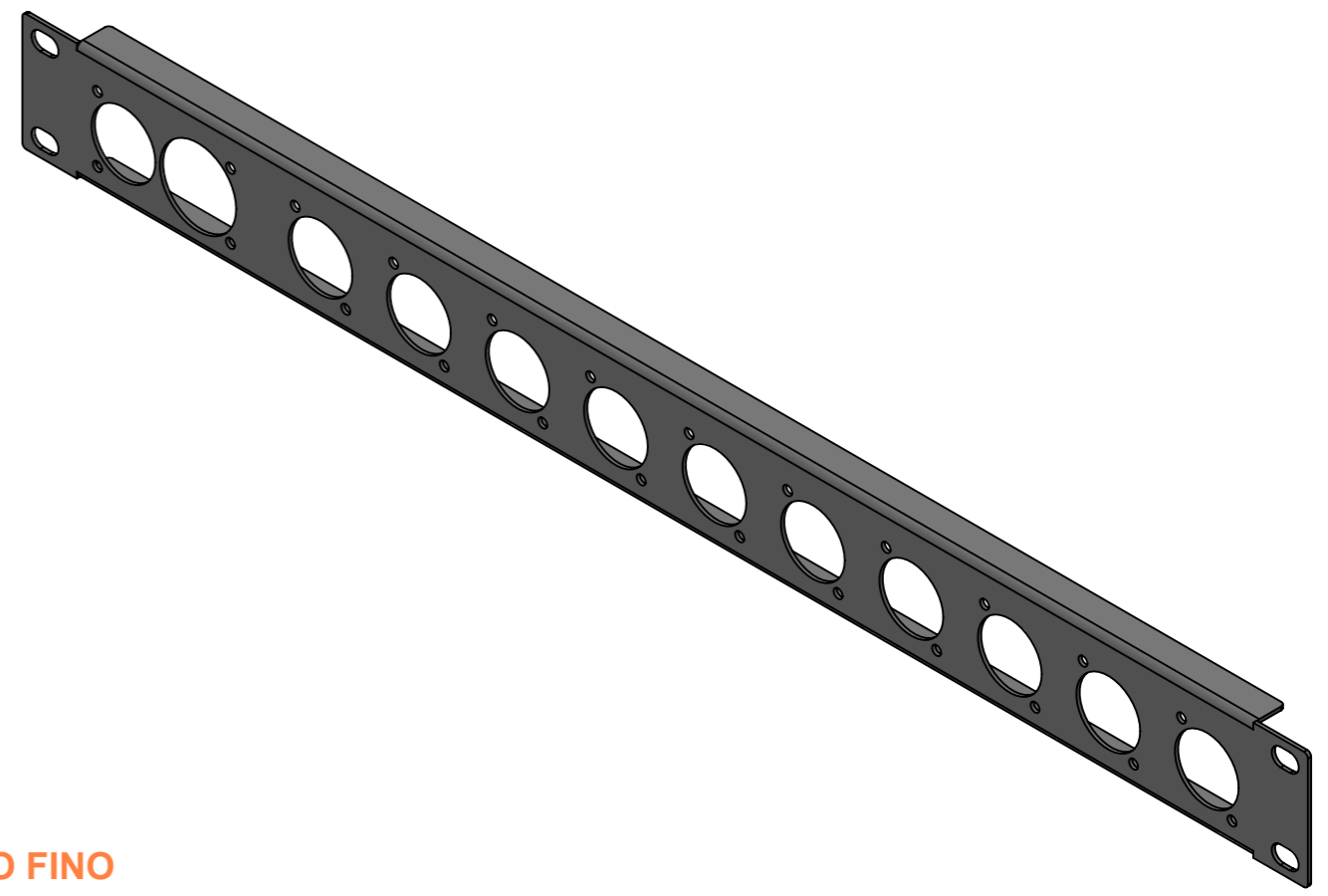
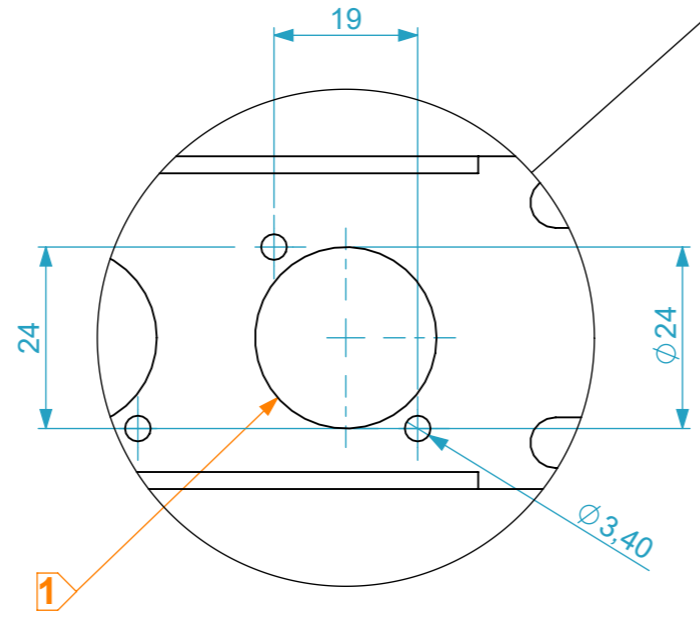
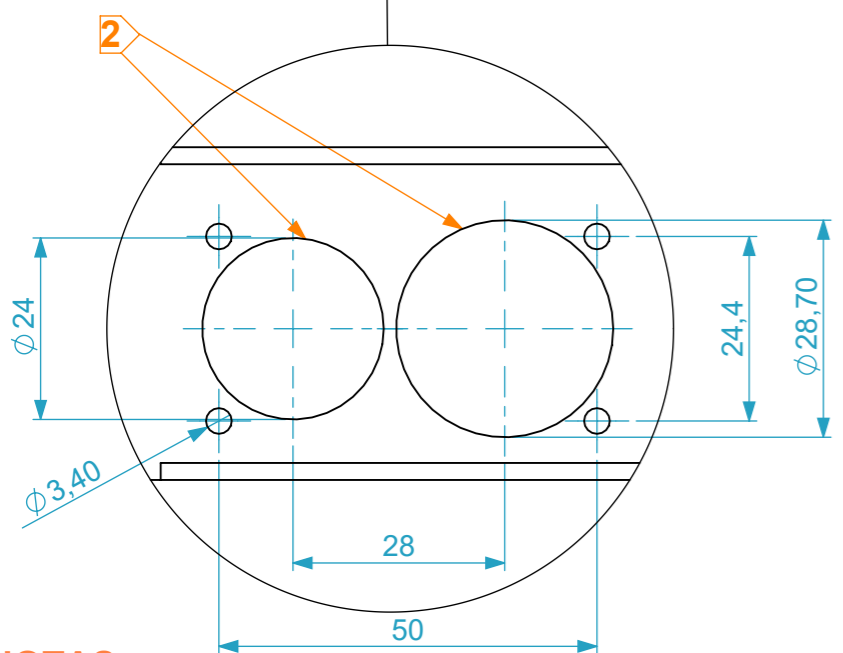
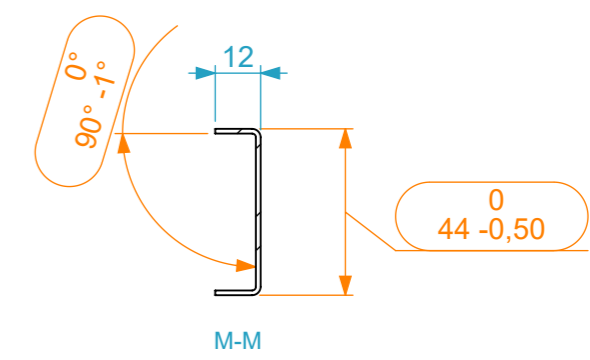
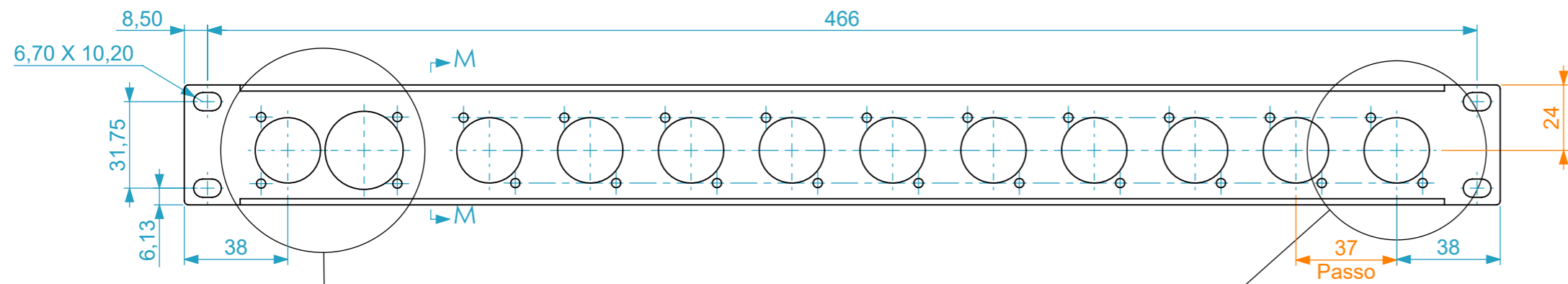


Material: Chapa de Aço DC01
Espessura: 1.25
Planificado: 483 x 63.52
Furos: 40
Quinagens: 2
Peso: 0.24 kg



NOTAS:

- 1 FURAÇÃO D-SERIES
- 2 FURAÇÃO POWERCON TRUE1 TOP (INLET-OUTLET COMBINATION)
3. ACABAMENTO: PINTURA ELECTROESTÁTICA EPÓXI-POLIÉSTER RAL 9005 TEXTURADO FINO

Lista de Referências p/ Produção Externa			
Item nº	Quant.	Descrição	Ref.
1	1	Corte e Quinagem - 19" RKP 1U, 1x True1 in-out, 10x D-Series	RKP.TR1D10.CQ
1	1	Lacagem RAL 9005 - 19" RKP 1U, 1x True1 in-out, 10x D-Series	RKP.TR1D10.L90

Material	Name	Date
Drawn by	alexandre	15/06/2022
Reference	RKP.TR1D10	
Scale 1:2		
units in mm DO NOT SCALE general tolerance 0.8mm		
19" Rack Panel 1U, 1x True1 in-out, 10x D-Series		

This drawing must not be copied or disclosed without consent of the owner

