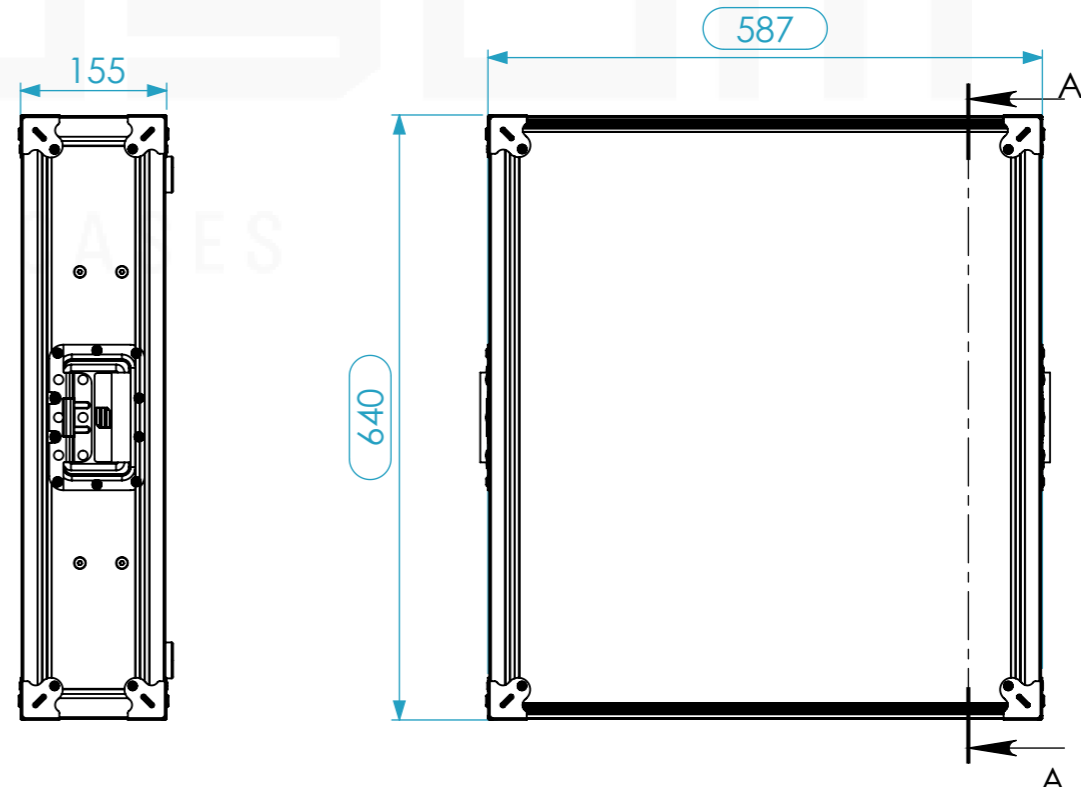
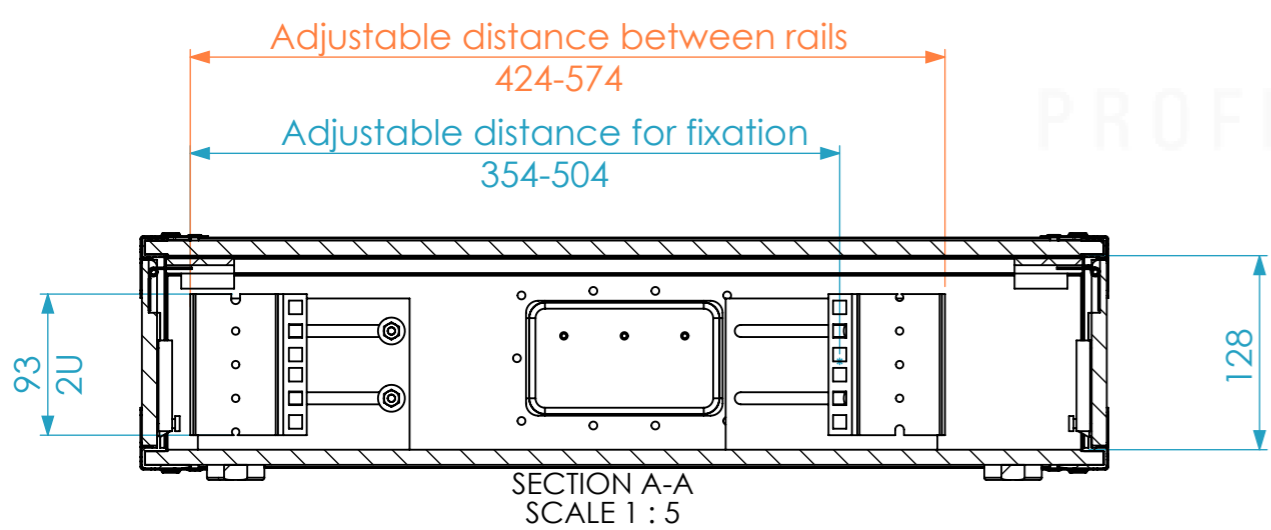
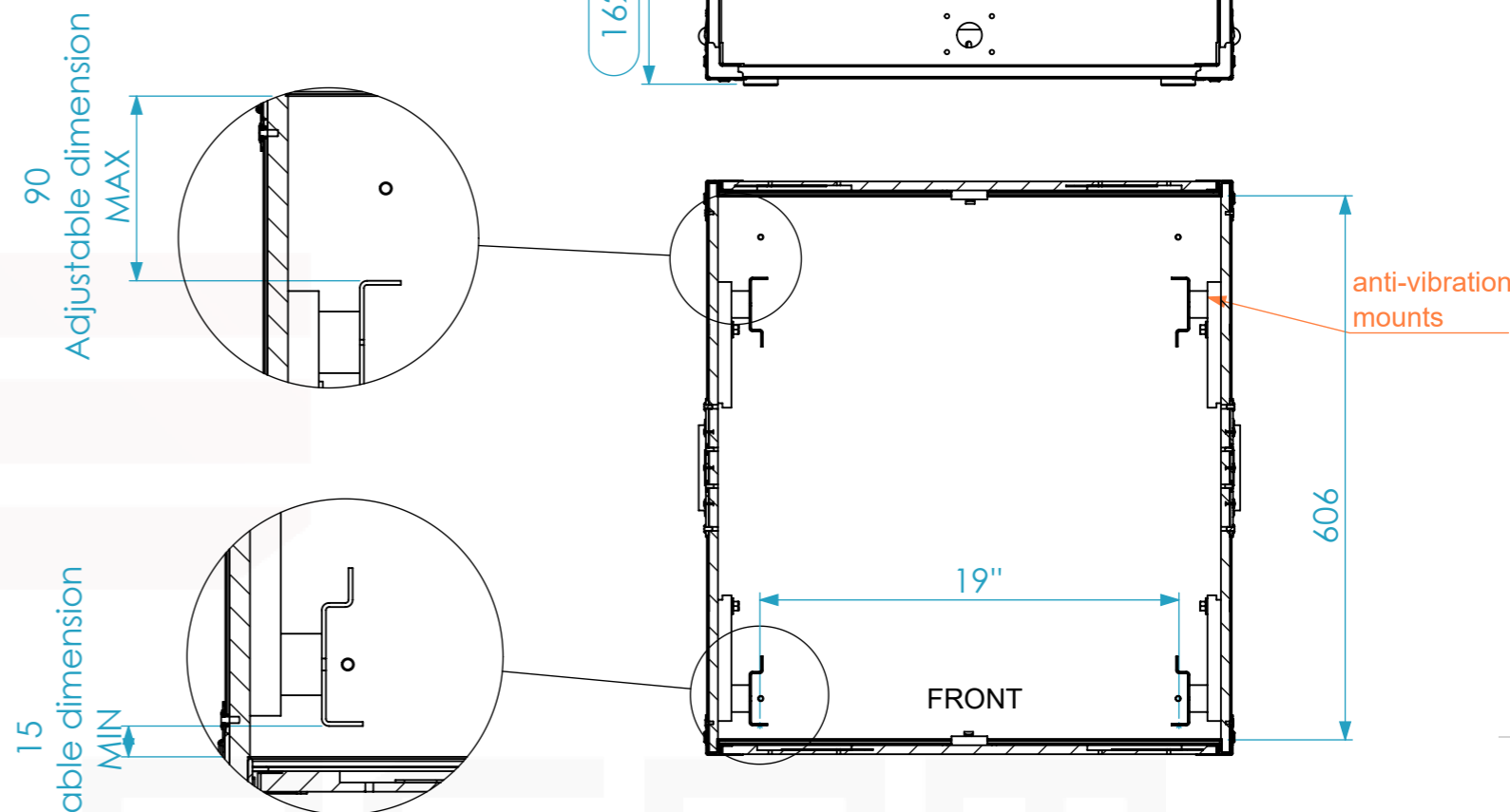
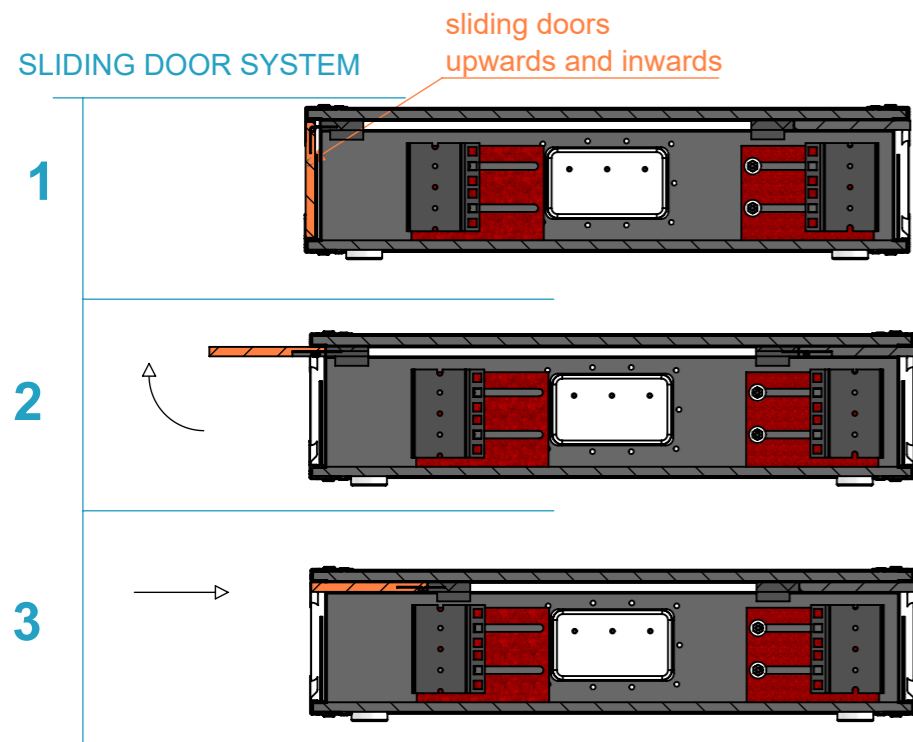


Interior dimensions		
Width	Depth	Height
19"	590	2Un
Weight	Approx. 11 Kg	
Wall Thickness	10mm	

REVISIONS				
ZONE	REV.	DESCRIPTION	DATE	APPROVED
-	1	Optimized door length +3.5mm	16/04/18	Catarina Duque
-	2	Door length - 3mm. ; Latch positioned +2mm upwards.	22/10/18	Catarina Duque



Drawn by	Name	Date
CatarinaDuque	CatarinaDuque	22-10-2018
Reference	AST1.0264	
Scale	units in mm	general tolerance
1:8	DO NOT SCALE	0.8mm
19" SLIDING-RACK 2U 354-504 ADJUSTABLE		



This drawing must not be copied or disclosed without consent of the owner



A3