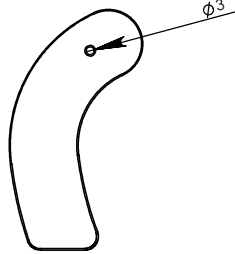
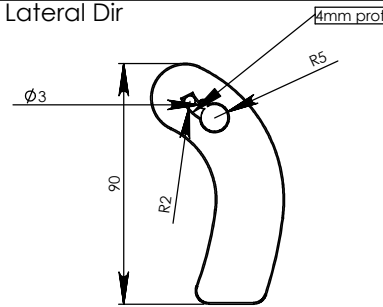


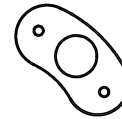
Lateral Esq



Lateral Dir



Apoio Dimer



Lista de Peças

Descrição	Ref.	QTY.	comp. (W)	largura (D)	esp. (Z)	Material
Suportes laterais	PE500.010.00	1	90	50	10	PE High Density
Apoio Dimer	PE500.010.00	1	49,7	26	15	PE High Density
Barra Led Paris	PERFIL.100	1	756	0	0	ALUMÍNIO
DIFUSOR opalino P/ PERFIL LED PARIS	PERFIL.100.01	1	756	n		Acrílico
FITA LED FLEXÍVEL, 60 LEDS/M 5050SMD DC12V - NEUTRAL WHITE	FL060.5050.NW	1	750			
PARAFUSO EMB. SEXT.INT.M4X25 ZC	DIN7991.M425.ZC	2				
Transformador	EC.TRF02	1				
Dimmer 12V/24V - 30W 22x16mm	DIM.001	1				

Dimer liga a parte macho direto ao Led
A parte femea serve para o transformador

This drawing must not be copied or disclosed without consent of the owner

Drawn by	Name	Date
telmosantos	telmosantos	15-11-2015
Reference	MIXER.484.A03	
Scale	1:5	
UNITS: in / mm	DO NOT SCALE	general tolerance 0.8mm
1st Angle projection	Kit LED para MIDAS M32R	

