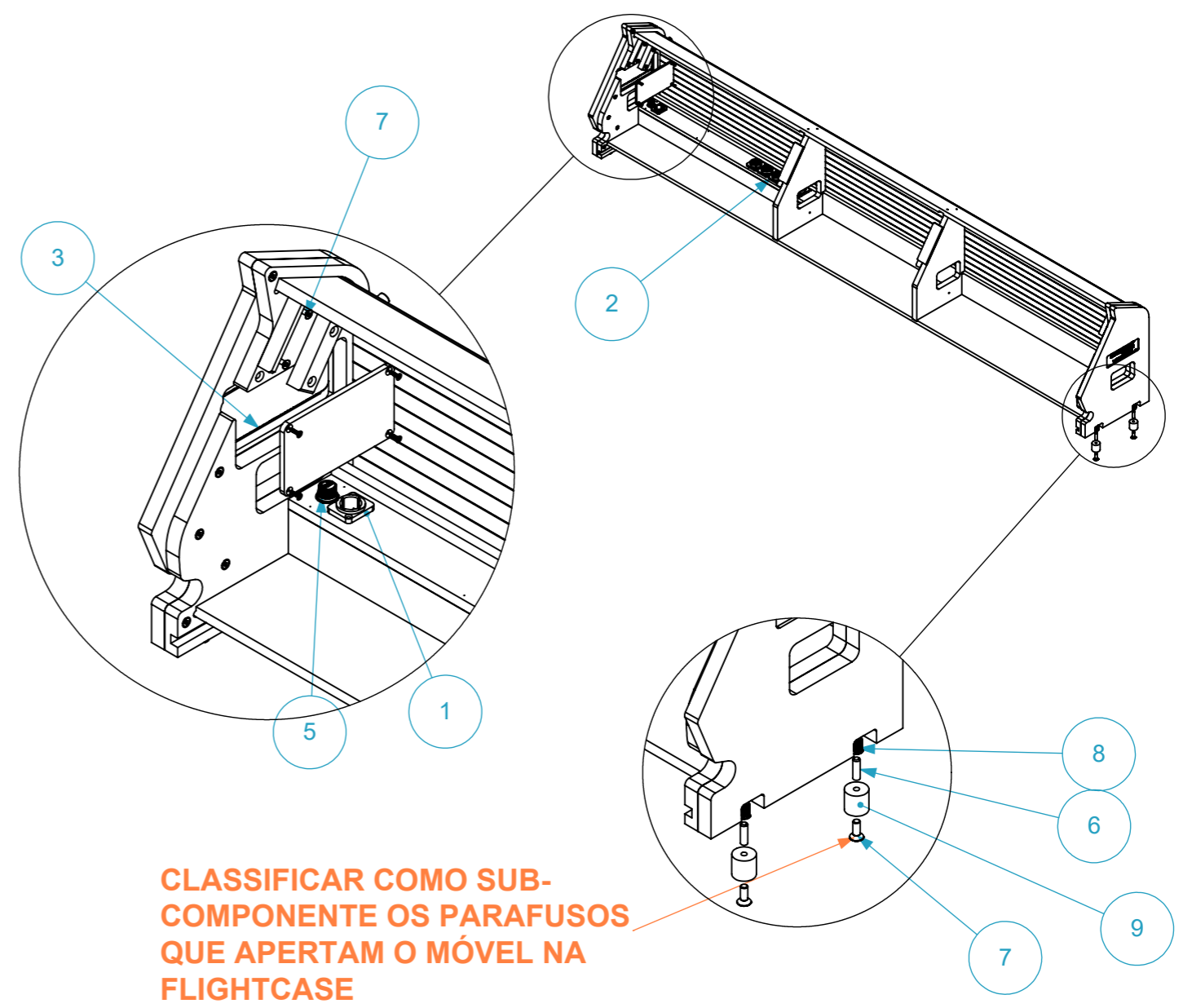
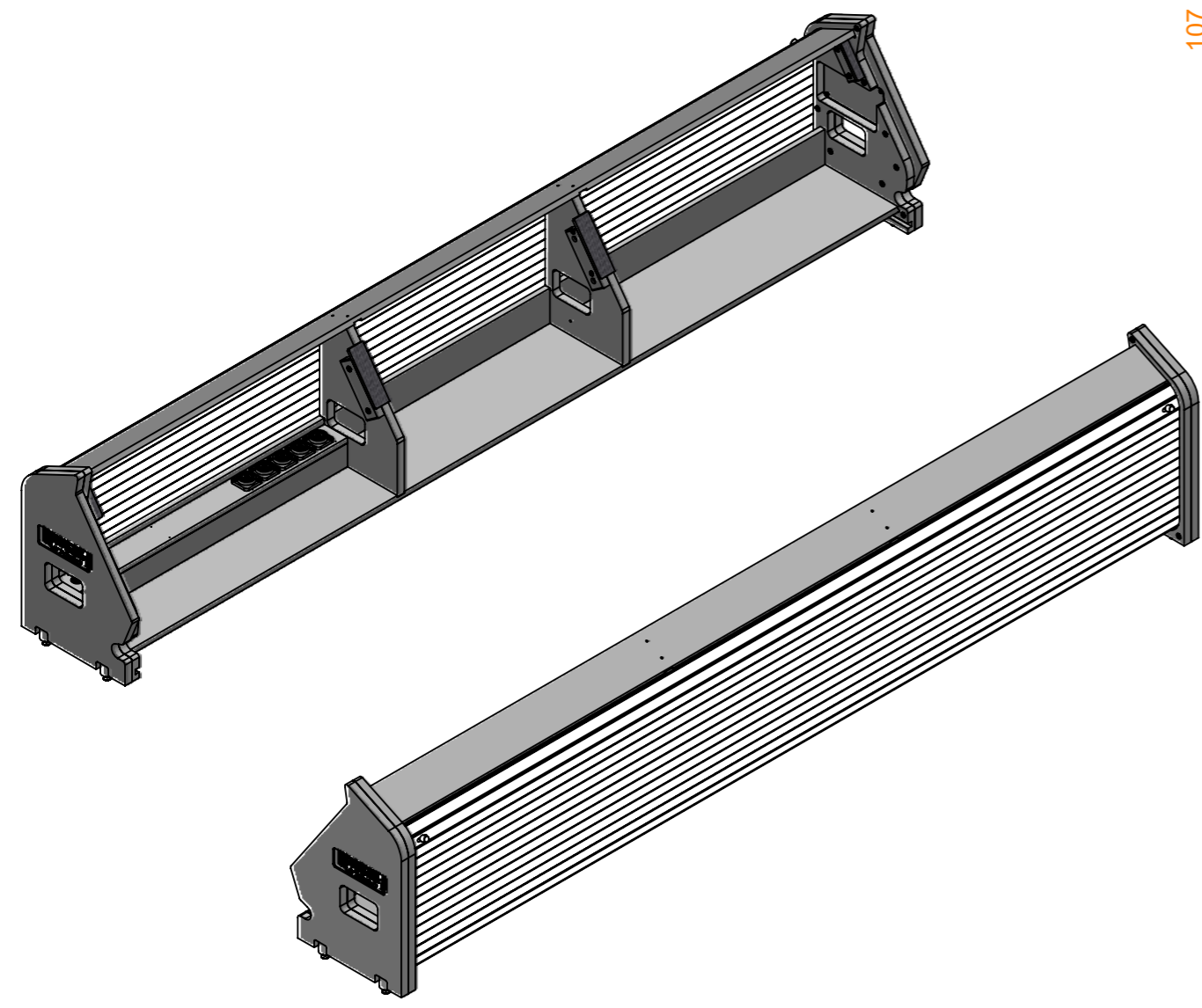
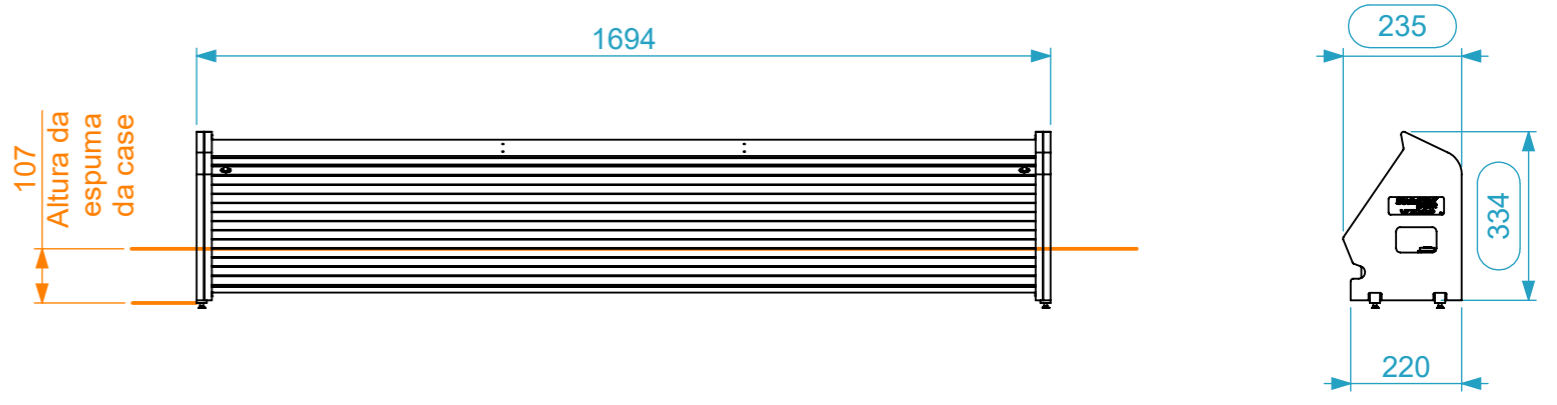


Dimensões

Comprimento	Largura	Altura
1694	235	334
Peso	Approx. 10 Kg	
Espessura	15mm	



CLASSIFICAR COMO SUB-COMPONENTE OS PARAFUSOS QUE APERTAM O MÓVEL NA FLIGHTCASE

Lista de Componentes

Item nº	Quant.	Descrição	Ref.
1	1	Ficha Powercon True1 Mc. (in) painel 16A, linha TOP, Neutrik	NAC3MPX-TOP
2	5	Ficha Powercon True1 Fm. (out) painel 16A, linha TOP, Neutrik	NAC3FPX-TOP
3	4	FITA LED SLALOM, FITA LED SLALOM, 60 LEDS/M 2835SMD DC12V - NEUTRAL WHITE SILICONE 2UN - 100mm	FL060.2835.NWS
4	1	Transformador Led estanque, 12V, 20W, IP66	EC.TRF03.05
5	1	Porta fusível painel 6,3x32	EC.FUS6-32
6	4	PERNO SEXTAVADO INTERIOR M6X20 - ZINCADO	DIN913.M620.ZC
7	33	PARAFUSO EMB. SEXT.INT.M4X20 - OXIDADO	DIN7991.M425.OX
8	34	PORCA BÚSSOLA, AÇO M4X10 - ZINCADO	DIN0935.M410.ZC
9	4	SINOBLOCO AMORTECEDOR Ø20X20 FF M6	AMORT.2020

Material	Name	Date	 santosom <small>PROFESSIONAL CARDS</small>
Drawn by	paula.almeida	07/10/2022	
Reference	MIXER.311P32.A01		
This drawing must not be copied or disclosed without consent of the owner		Scale 1:15	<small>units in mm</small> <small>DO NOT SCALE</small> <small>general tolerance 0.8mm</small>
1st Angle projection		Compartmento Sliding PRO-3.2 p/ Soundcraft Vi7000	