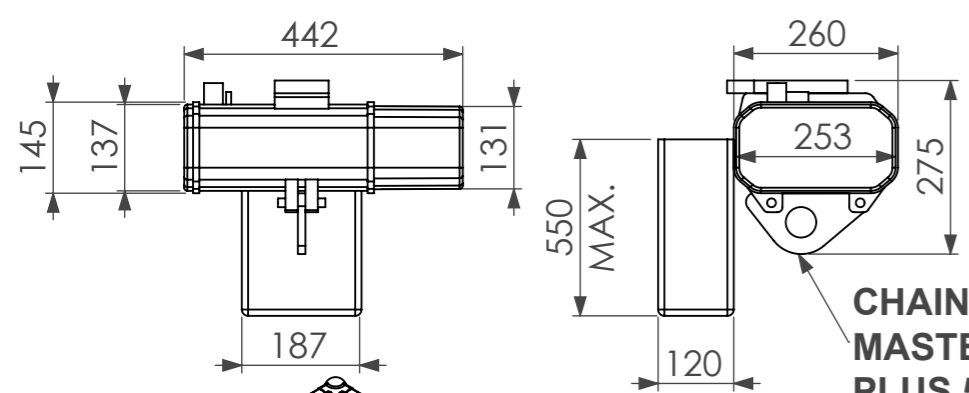
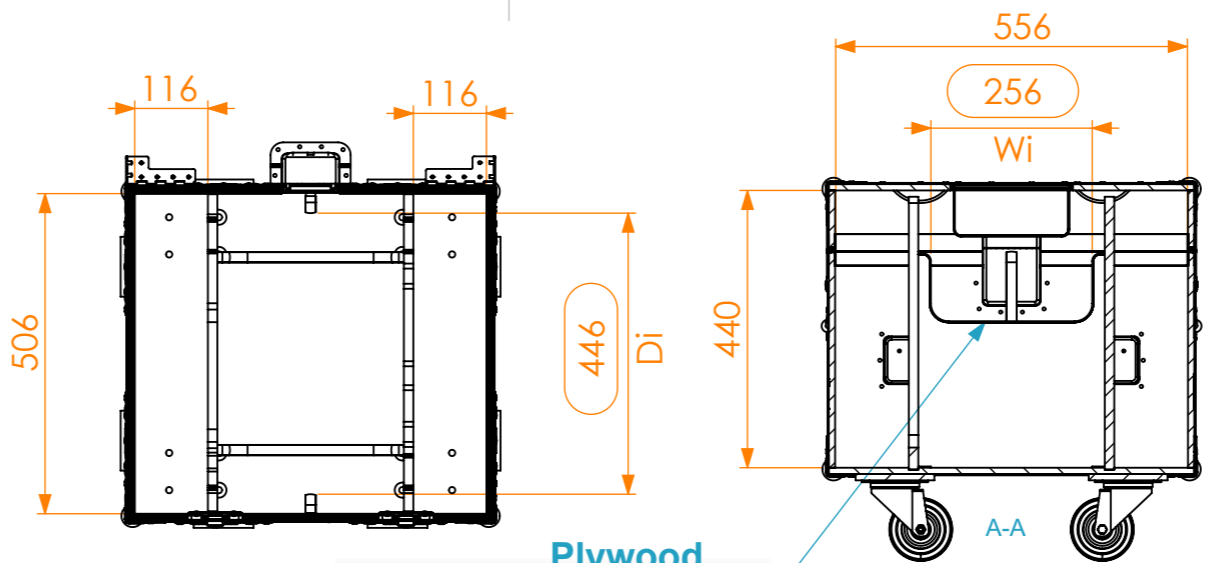


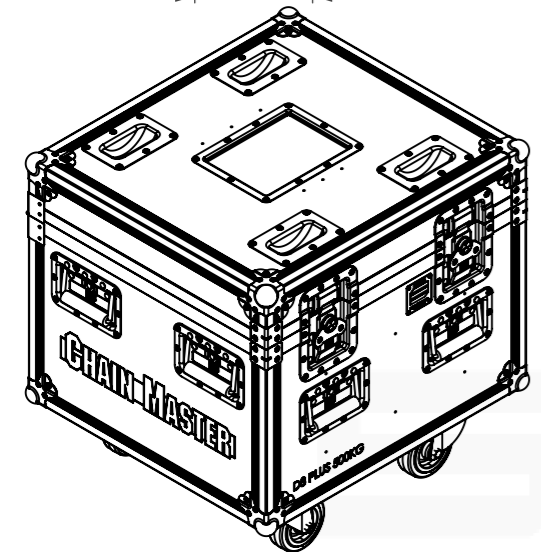
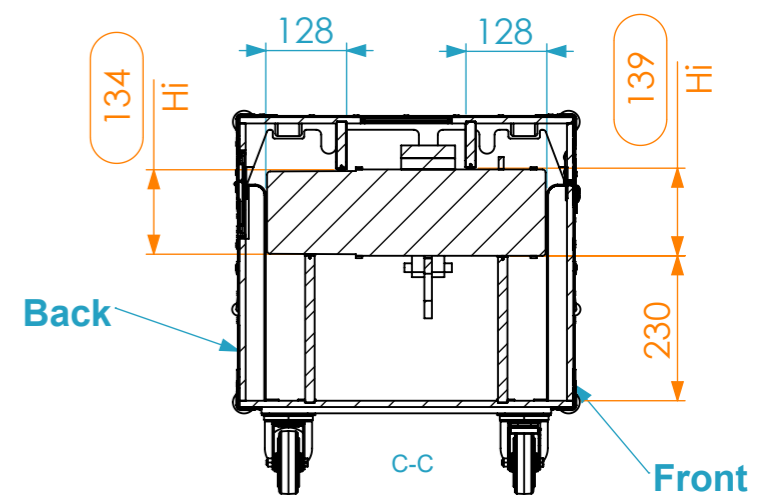
Equipment	CHAIN MASTER D8 PLUS 500KG	
Width	Depth	Height
442	260	144
Internal Dimensions		
Width	Depth	Height
436	436	360
Weight	Approx. 28 Kg	
Wall Thickness	10mm	



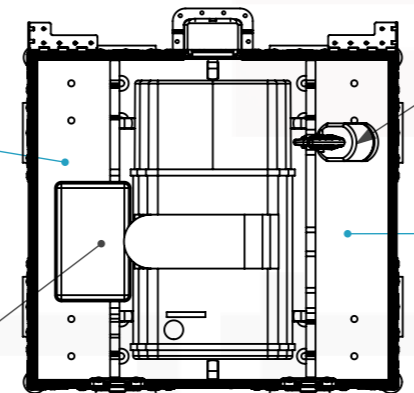
CHAIN MASTER d8 PLUS 500 kg



Plywood partitions with rubber edgbanding



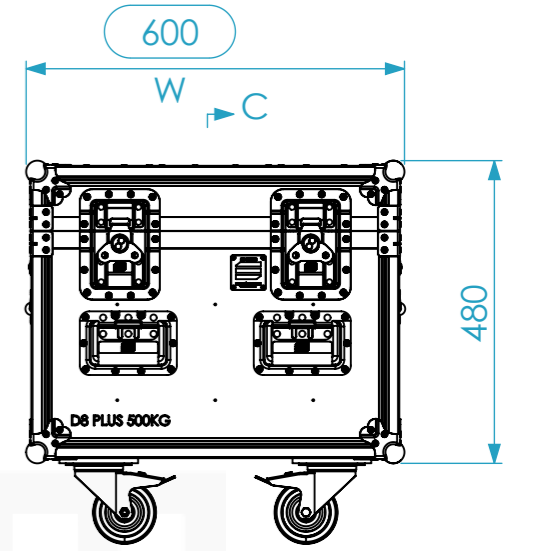
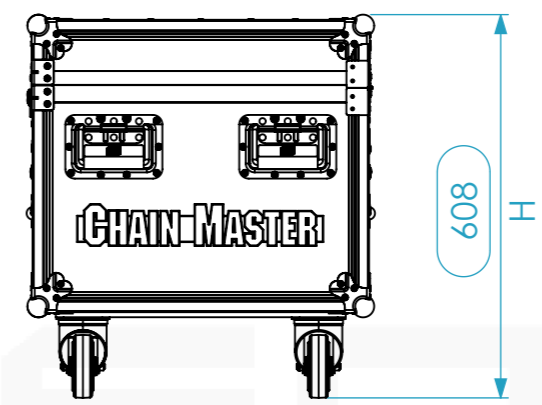
Compartment for the chain bag and electrical cables



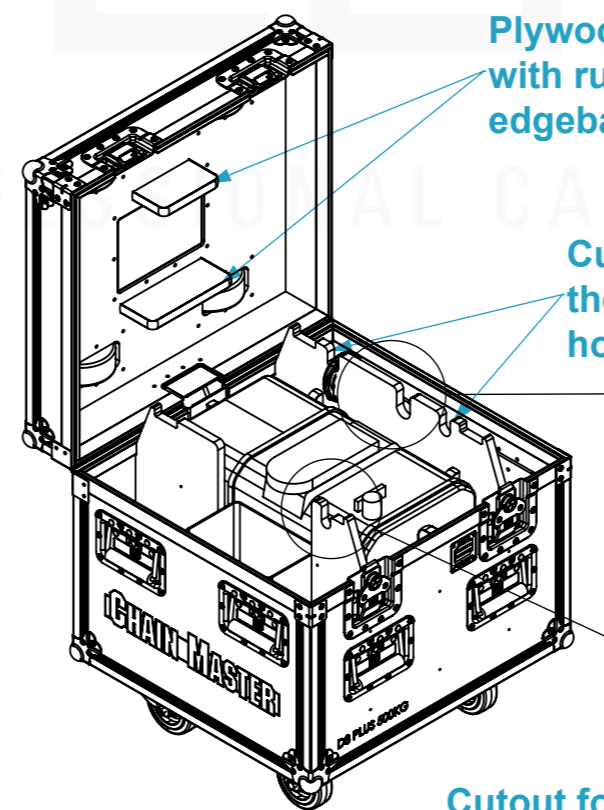
Hoist Hook

Compartment for hoist chain and hook

Hoist Bag



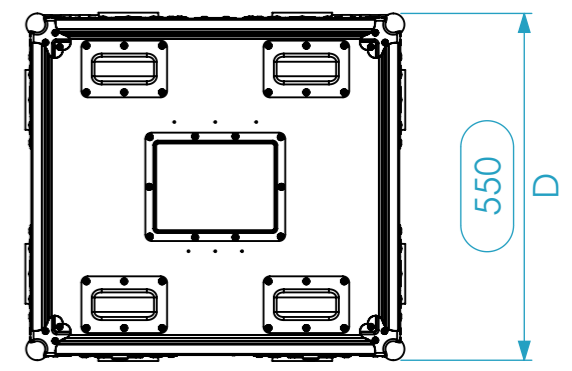
Plywood stays with rubber edgbanding



Cutouts for the chain hook

Cutout for hoist chain

Cutout for electrical cable



Hardware		
Qty	Ref.	Description
4	40403	Large corner bracket f. 35mm case angle
8	410429	Heavy Duty Ball Corner
1	CHAPA.1000	Identification Plate
8	34082	Recessed Sprung Handle Medium
2	DCR110	Combination of Hinge and 2 Corner Braces
2	RODA.100T	Swivel castor Ø100mm with brake
2	RODA.100	Swivel castor Ø100 mm
4	38083	Castor dish deep zinc plated
2	172511PEN	Butterfly Latch large cranked 14 mm deep - MOL-compatible
1	270836	Large lidstay cranked / hinge
1	88001D	Dish for 88001 Tour Label
2	R1.055	Whells Feet for 550mm cases

General External Dimensions	
W	Width
D	Depth
H	Height
Usable Inner Dimensions (UID)	
Wi	Inside Width
Di	Inside Depth
Hi	Inside Height

Name	alexandre	
Date	07-02-2018	
Reference	LIFT.139	
Scale	1:12	units in mm
DO NOT SCALE	general tolerance	0.8mm
1st Angle projection	FC, CHAIN MASTER D8 PLUS 500KG	



This drawing must not be copied or disclosed without consent of the owner

A3