

**Interior Regi dimensions**

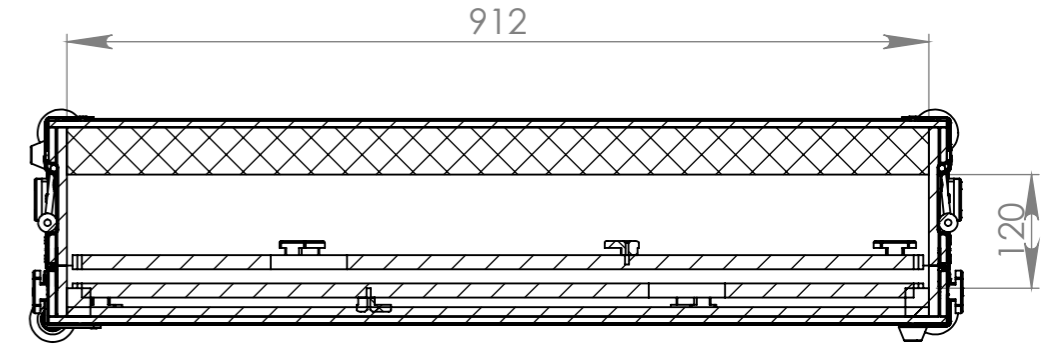
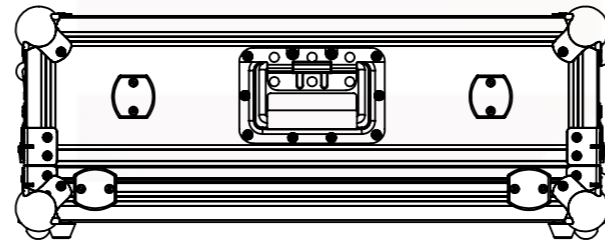
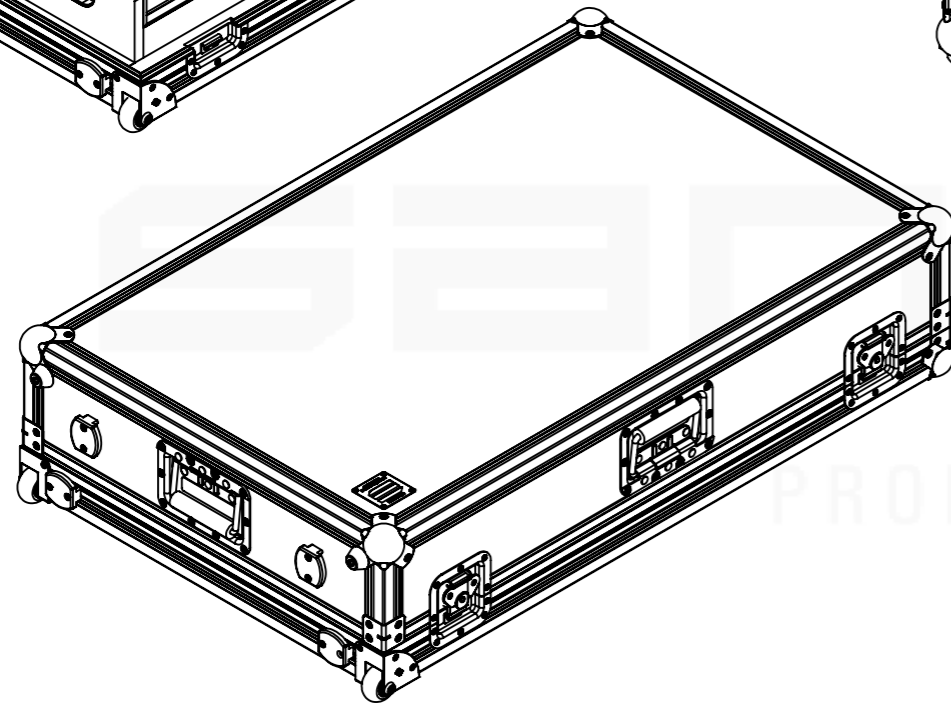
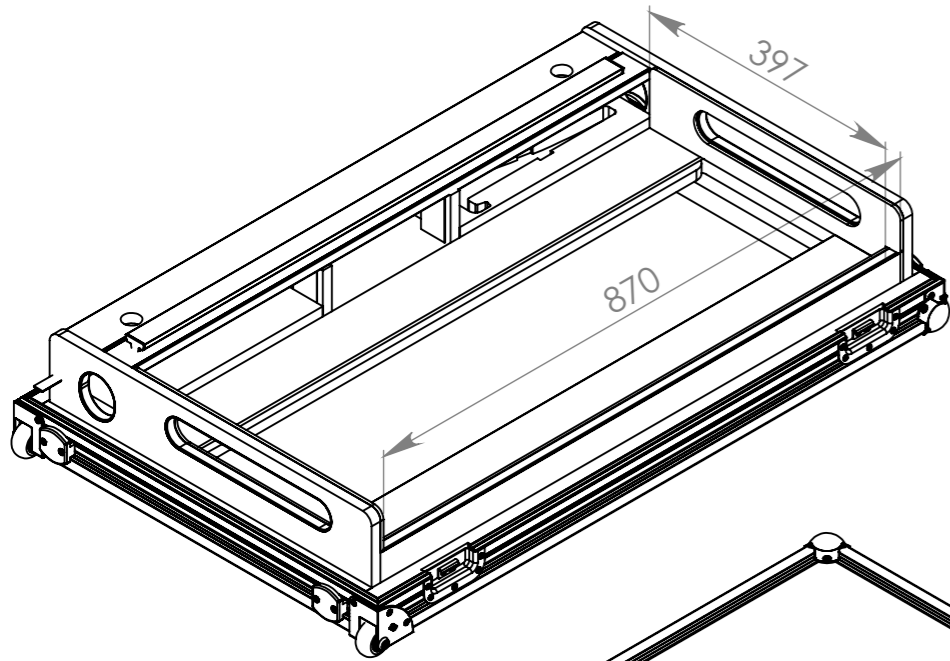
Width	Depth	Height
870	397	100

**Interior Case dimensions**

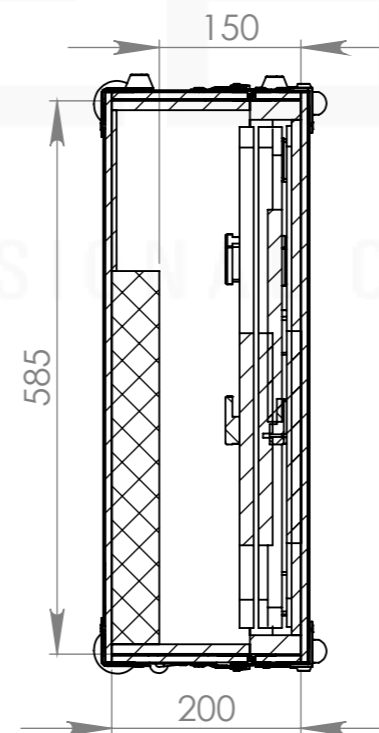
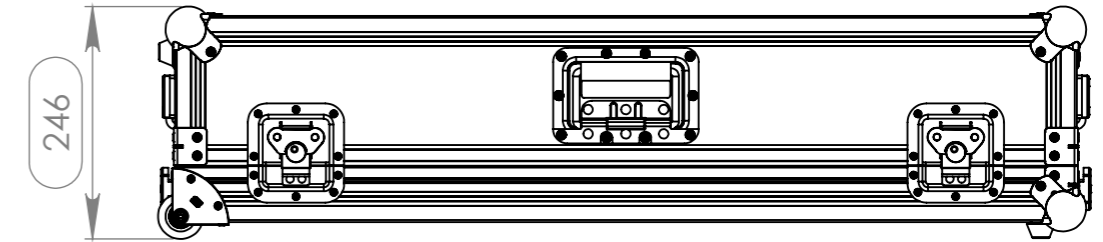
912	585	170
Weight	Approx. 40 Kg	
Wall Thickness	7mm	

REVISIONS

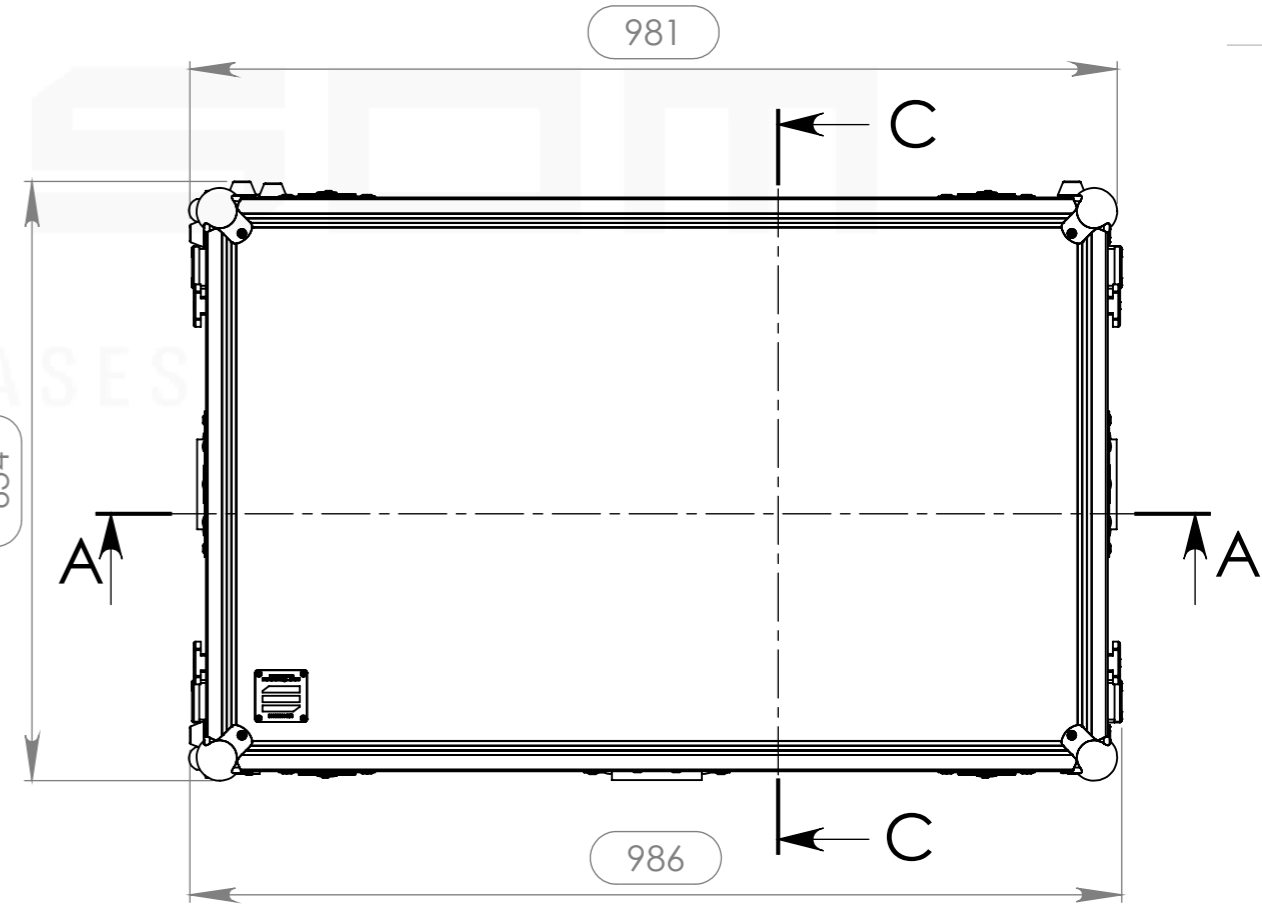
ZONE	REV.	DESCRIPTION	DATE	APPROVED
-	1	Final Drawing	13/08/2014	Delfim Alves
-	2	Final Drawing	04-09-2014	Delfim Alves
-	3	Wheel replacement ADAM-HALL	19/05/2017	Jorge Pacheco



SECTION A-A



SEÇÃO C-C



Hardware

Qty	Description
6	Large corner bracket f. 35mm case angle
4	Key lockable medium Butterfly special
8	Rubber foot 30 x 15mm, black
2	Wheels 50mm corner
6	Heavy duty ball corner, zinc plated
3	Recessed Sprung Handle Medium
2	Castor with 48 mm wheel in aluminium

This drawing must not be copied or disclosed without consent of the owner

Drawn by	Name	Date
jorgepacheco	jorgepacheco	19/05/2017
Reference	DJR7.087P	
Scale	units in mm	general tolerance
1:8	DO NOT SCALE	0.8mm
1st Angle projection	FC, PIONEER DJ CONTROLLER DDJ-SZ PORTATIL - RODAS	

