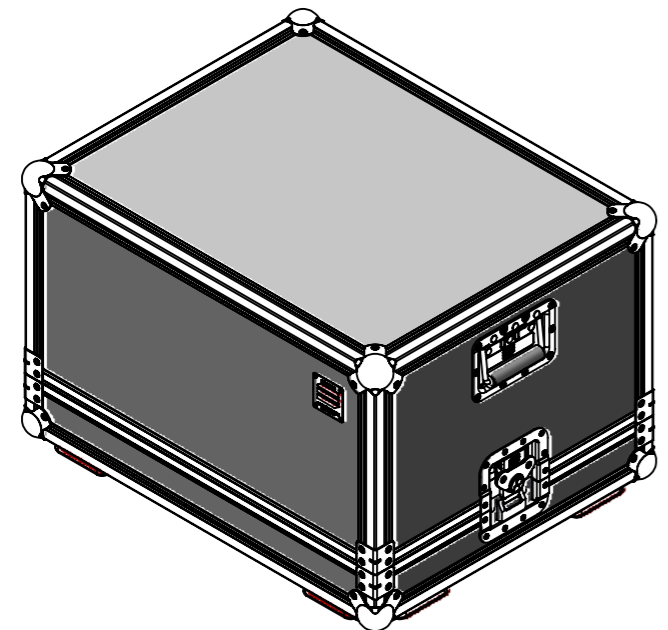
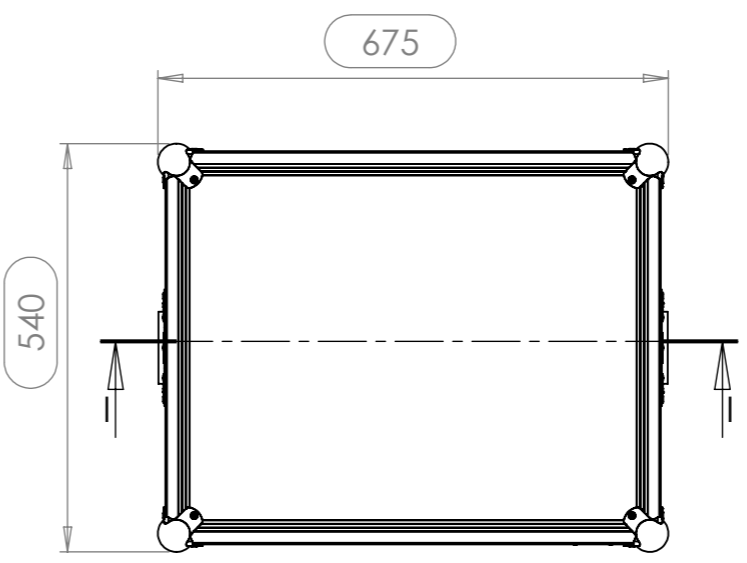
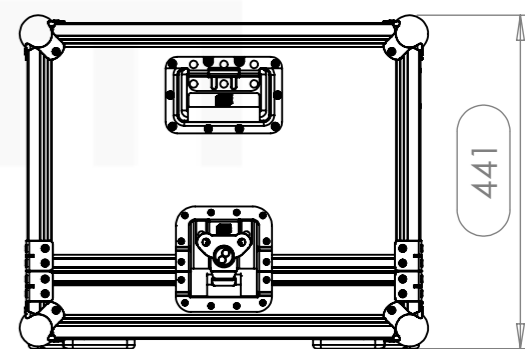
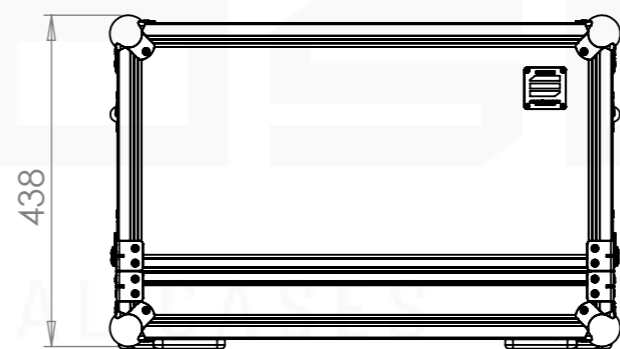
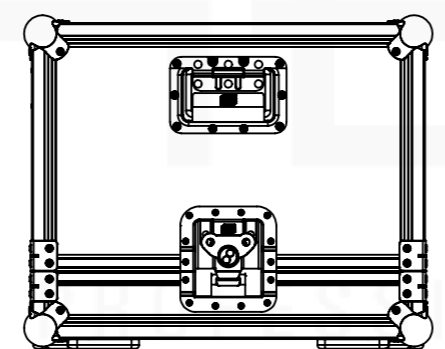
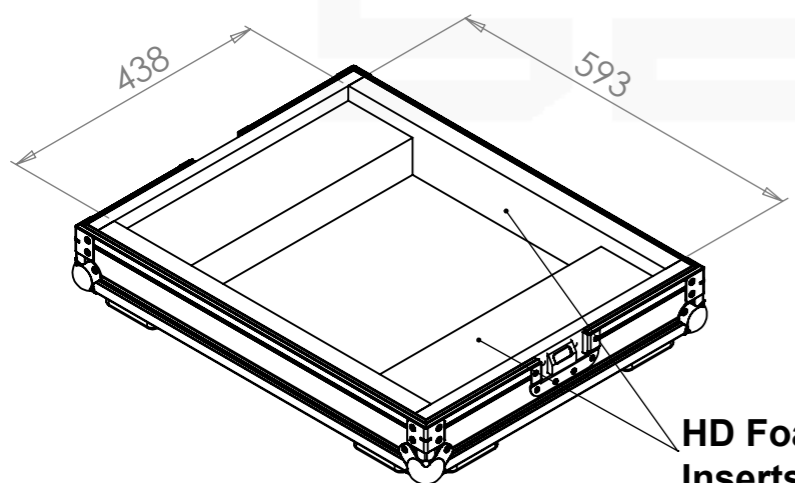
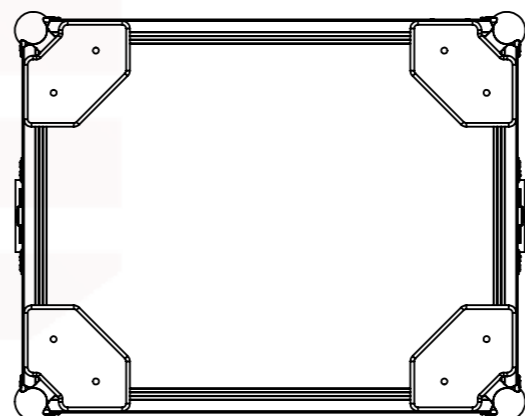
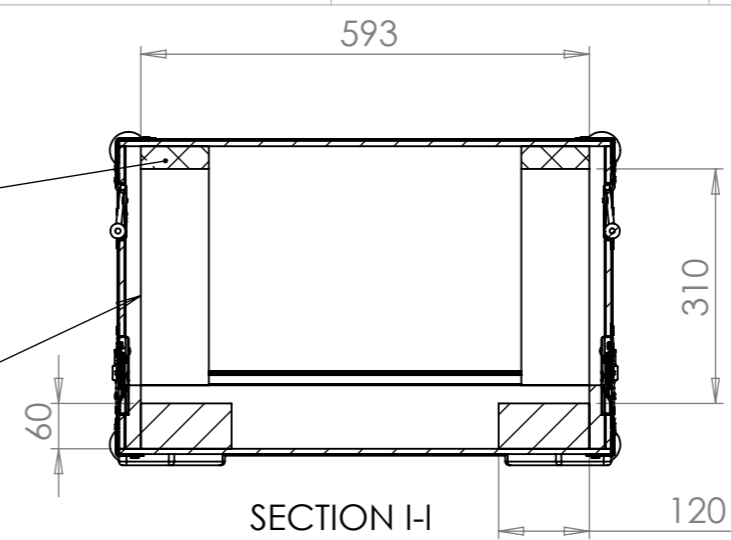


<b>Equipment</b>	MARKBASS 2X10 TRAVELER 102P	
<b>Width</b>	<b>Depth</b>	<b>Height</b>
590	435	320
<b>Internal Dimensions</b>		
<b>Width</b>	<b>Depth</b>	<b>Height</b>
593	438	310
<b>Weight</b>	Approx. 9 Kg	
<b>Wall Thickness</b>	7mm	



**Pressing Eggbox Foam  
30 mm thick**

**HD Foam Inserts**



Hardware		
Qty	Ref.	Description
8	4120	Heavy duty ball corner, zinc plated
8	40403	Large corner bracket f. 35mm case angle
2	34082	Recessed sprung handle medium model
1	CHAPA.1000	Identification Plate
2	172531	Large butterfly V3 with 'push-back' function

A3 This drawing must not be copied or disclosed without consent of the owner

Drawn by	Name	Date
alexandre	alexandre	25/11/2016
Reference	COMBO.611	
Scale	units in mm	general tolerance
1:10	DO NOT SCALE	0.8mm
1st Angle projection	FLIGHTCASE, MARKBASS 2X10 TRAVELER 102P	

