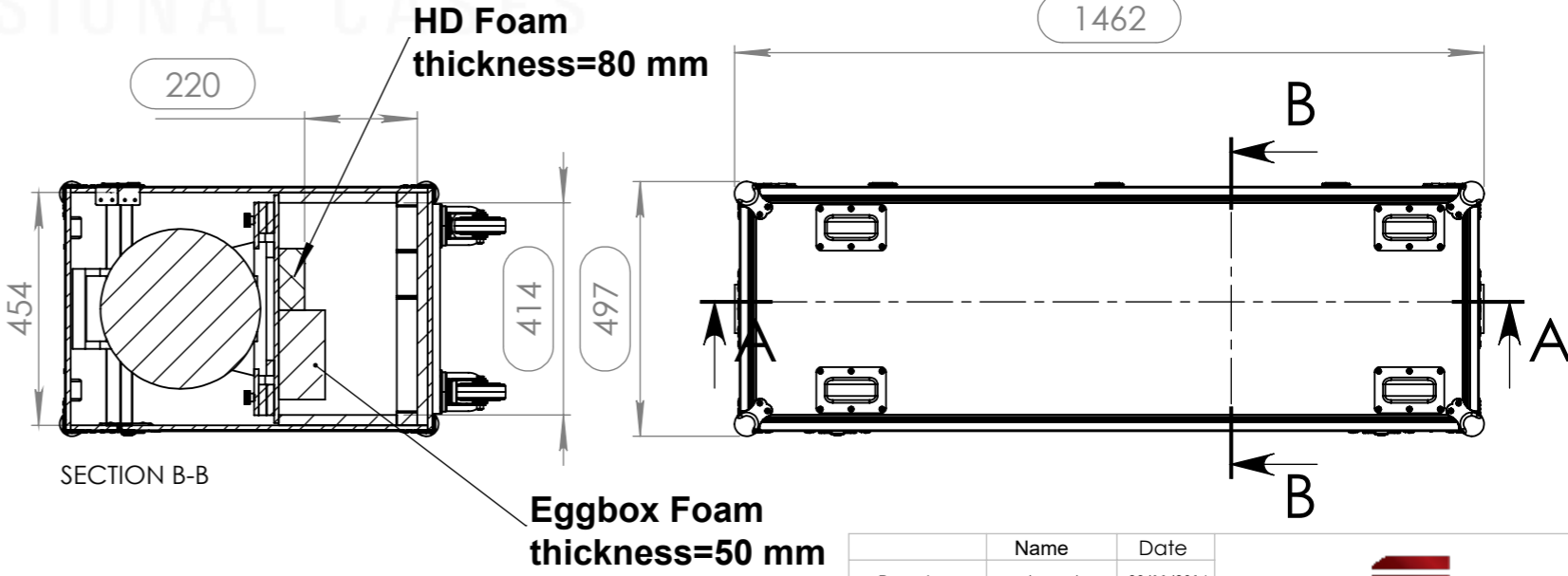
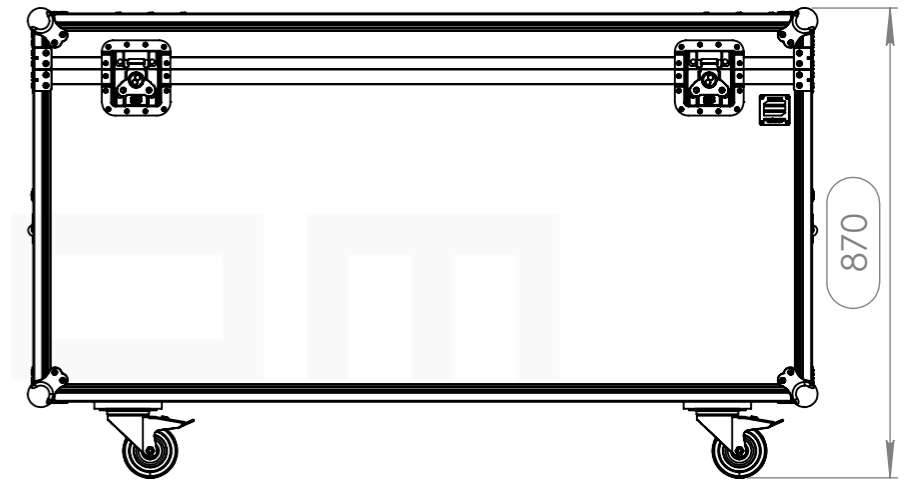
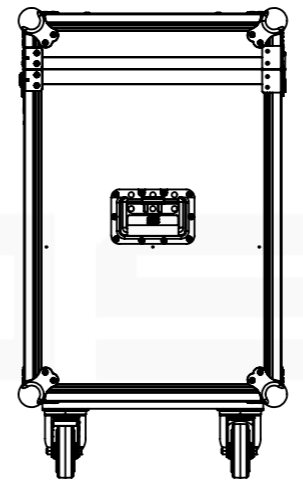
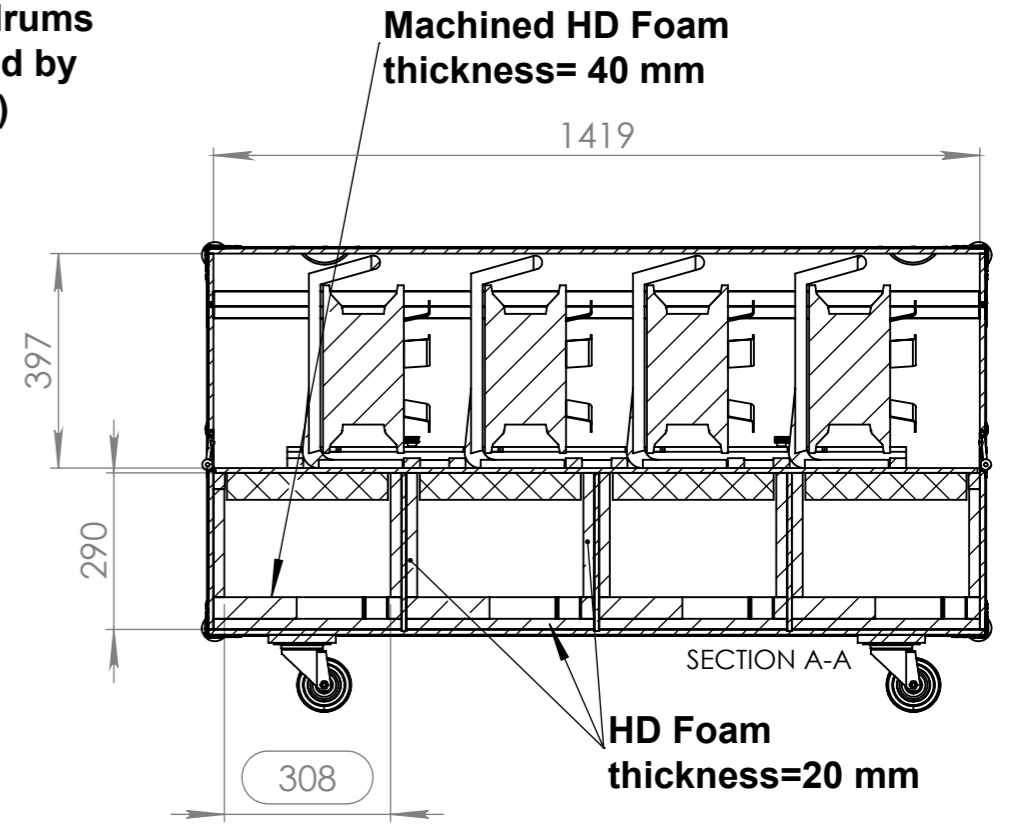
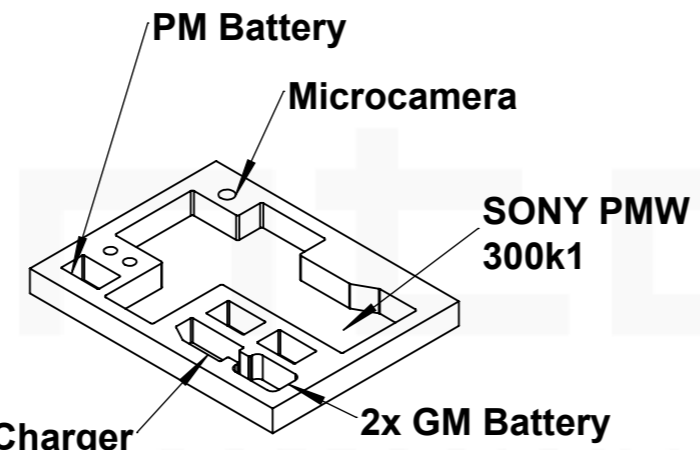
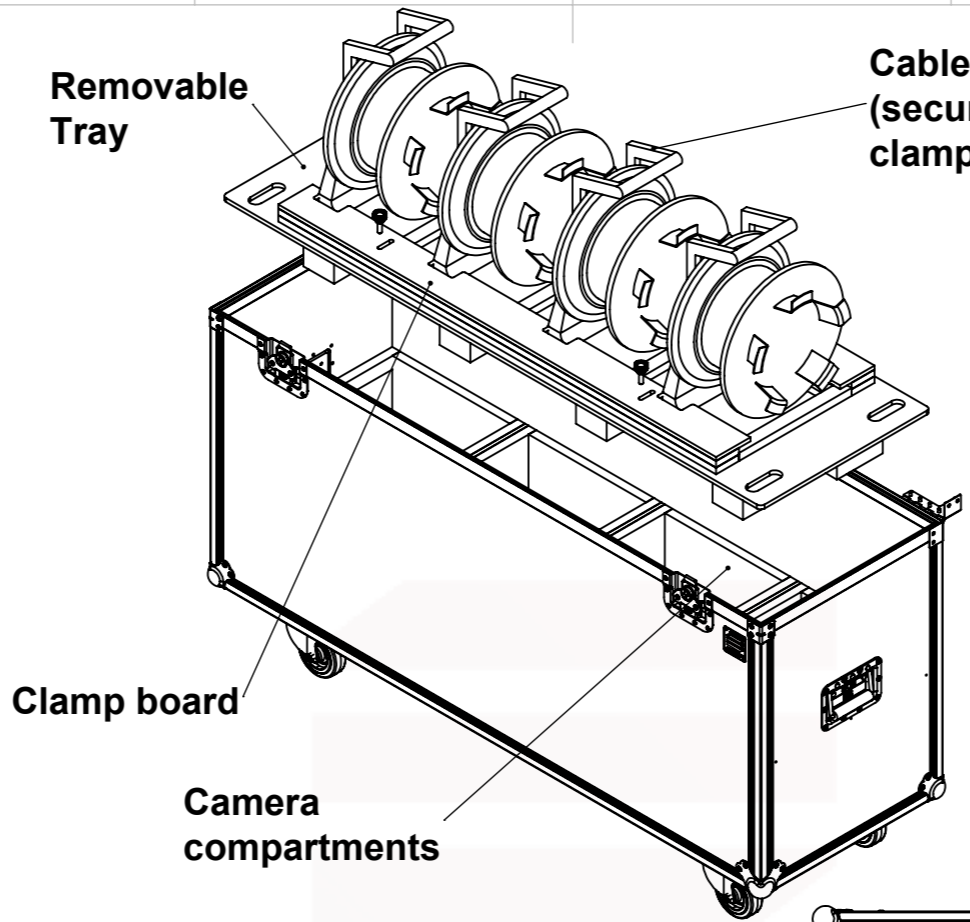
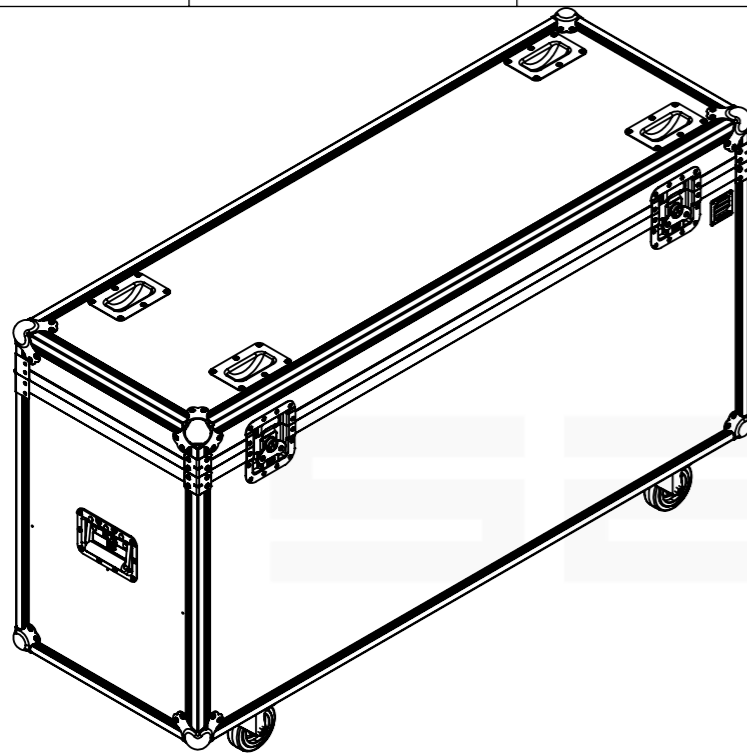


Equipment	4x SONY PMW 300K1	
Width	Depth	Height
405	405	405
Camera Compartment Internal Dimensions		
Width	Depth	Height
308	414	220
Weight	Approx. 87 Kg	
Wall Thickness		9.5mm
Equipment	4x CABLE DRUM 70225	
Width	Depth	Height
312	234	392
Compartment Internal Dimensions		
Width	Depth	Height
1419	454	397



Hardware		
Qty	Ref.	Description
2	34082	Recessed sprung handle medium model
1	CHAPA.1000	Identification Plate
4	40403	Large corner bracket f. 35mm case angle
2	RODA.100T	Swivel castor Ø100mm with brake
2	RODA.100	Swivel castor Ø100 mm
8	4101	Heavy duty ball corner, zinc plated
4	38083	Castor dish deep zinc plated
2	172531	Large butterfly V3 with 'push-back' function
2	DCR110	110MM hinge shot
3	2524	Heavy Duty Strut Hinge
4	MBT25.M825	Fluted grip knob BT.25 P-M8x25

This drawing must not be copied or disclosed without consent of the owner

Scale 1:14

units in mm DO NOT SCALE

general tolerance 0.8mm

FC, 4X SONY PMW300K1 + 4X 70225, ROULETTES

1st Angle projection

A3

Drawn by	Name	Date
alexandre	alexandre	29/11/2016
Reference	CAM12.106	

PROFESSIONAL CASES