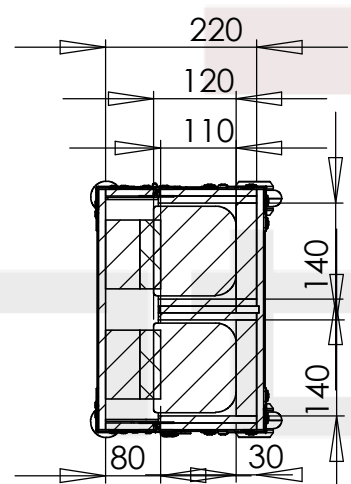
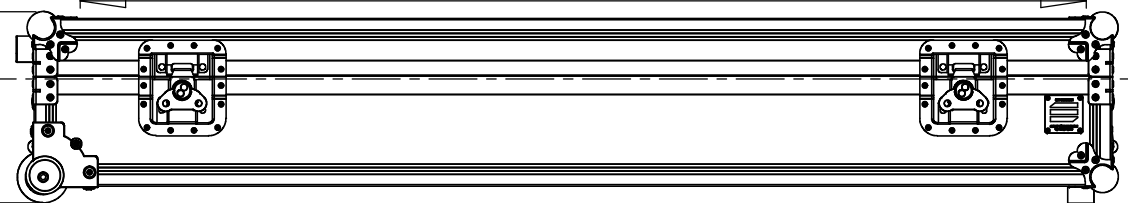
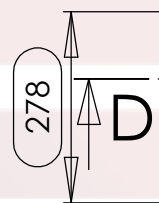
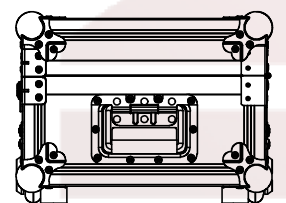
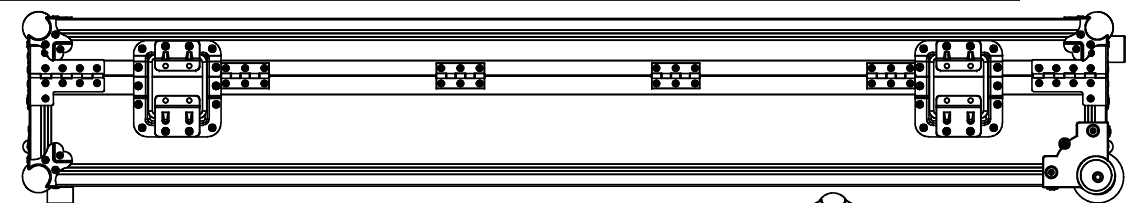
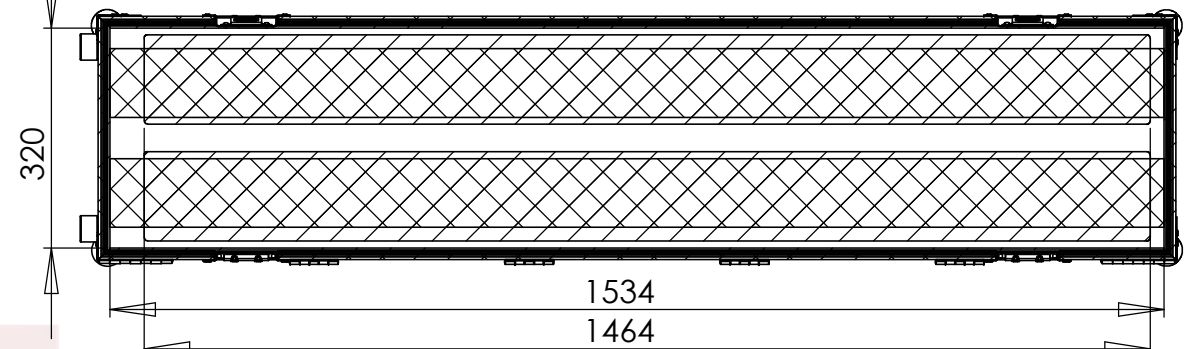


Interior dimensions		
Width	Depth	Height
1534	320	220
Weight	Approx.18 Kg	
Wall Thickness	10mm	

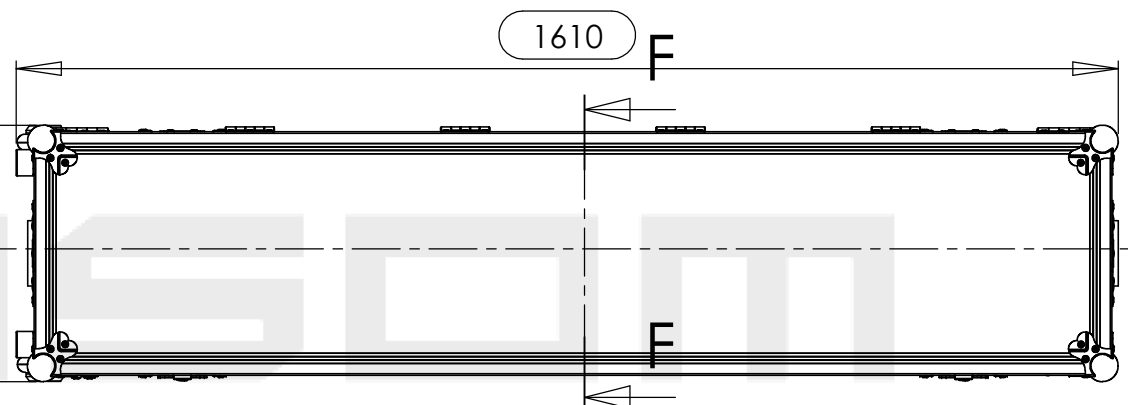
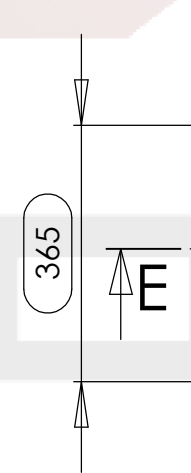
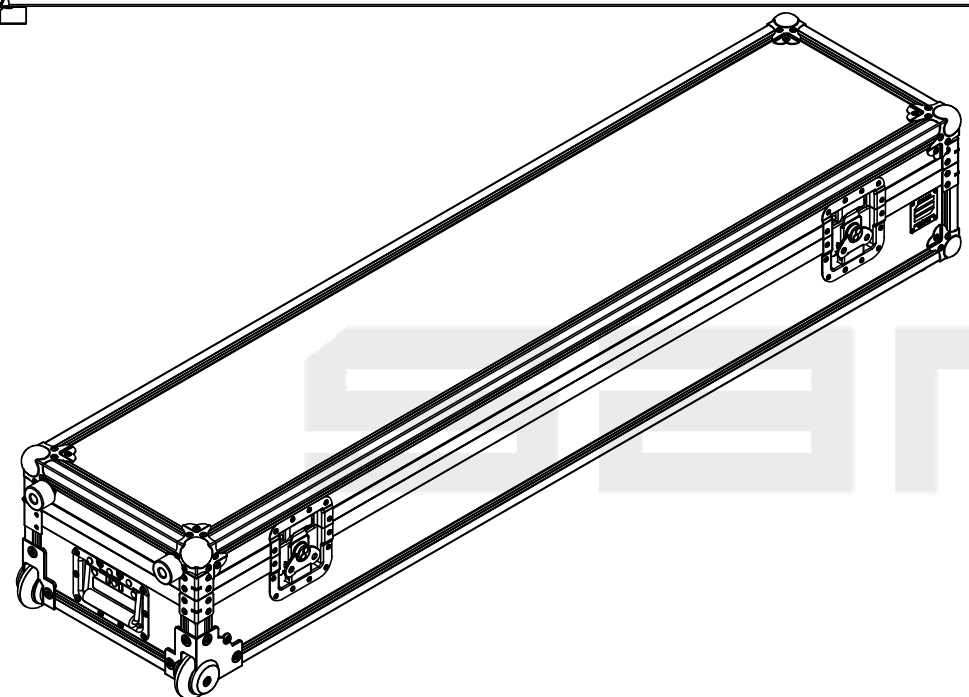
Medidas maximas do Equipamento		
Largura(w)	Profundidade(D)	Altura(H)
1464	130	120

REVISIONS				
ZONE	REV.	DESCRIPTION	DATE	APPROVED
A8	0	Final Drawing	12/05/2015	Carlos Rodrigues

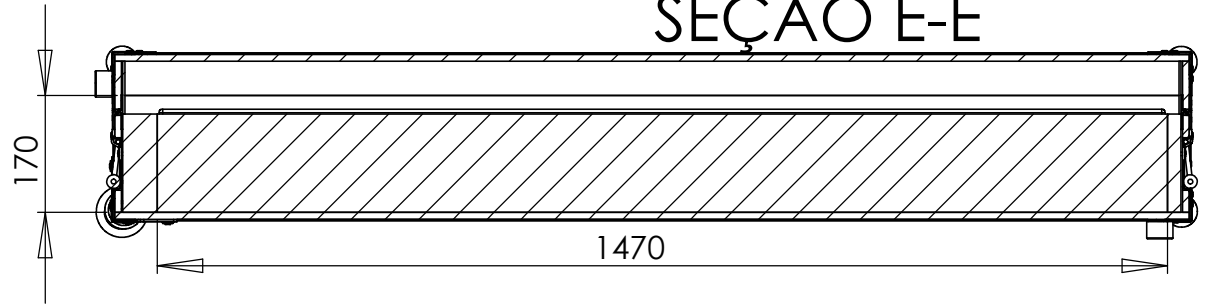
SEÇÃO D-D



SEÇÃO F-F



SEÇÃO E-E



Hardware		
Qty	Ref.	Description
1		Recessed sprung handle medium model
2	34082	Recessed sprung handle medium model
2	270736	Short recessed lidstay cranked
1	CHAPA.1000	Identification Plate
2	172531	Large butterfly V3 with 'push-back' function
4	40403	Large corner bracket f. 35mm case angle
6	410429	Ball Corner large three-leg cranked 35 mm 9 holes
2	DCR110	110MM hinge shot
4	2602	Medium duty butt hinge z./p.
4	4911	Rubber foot 38 x 25 mm with steel insert
1	37451	Recessed Corner Castor 75mm, Die-Cast Housing
1	37451	Recessed Corner Castor 75mm, Die-Cast Housing

This drawing must not be copied or disclosed without consent of the owner

Drawn by	Name	Date
projects		12/05/2015
Reference	CABINET.372	
Scale	units in mm	general tolerance
1:11	DO NOT SCALE	0.8mm
FC. 2X FOHIN AUDIO LINEA LX-150 - RODAS		

