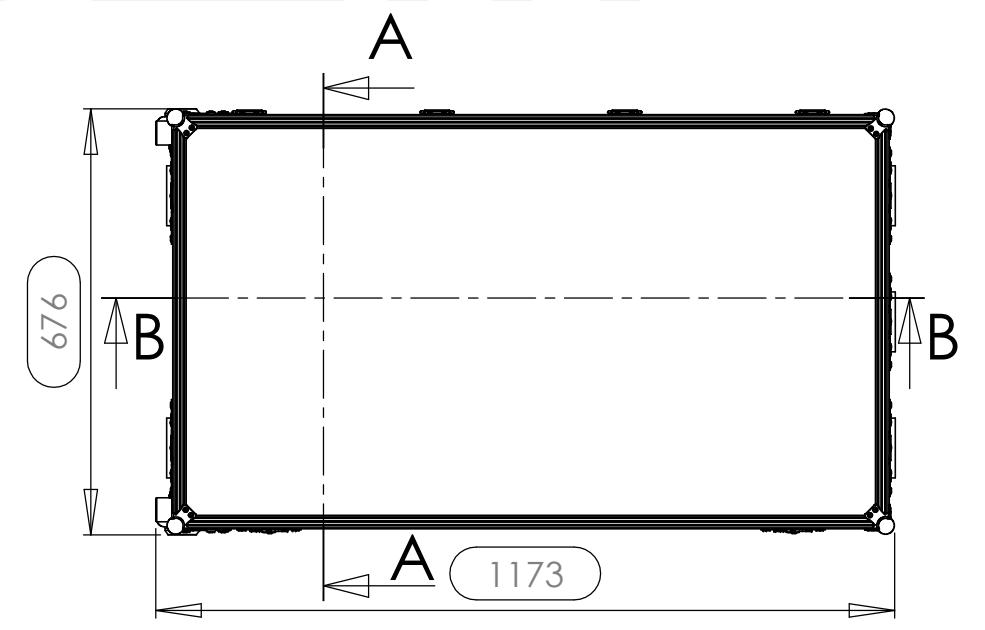
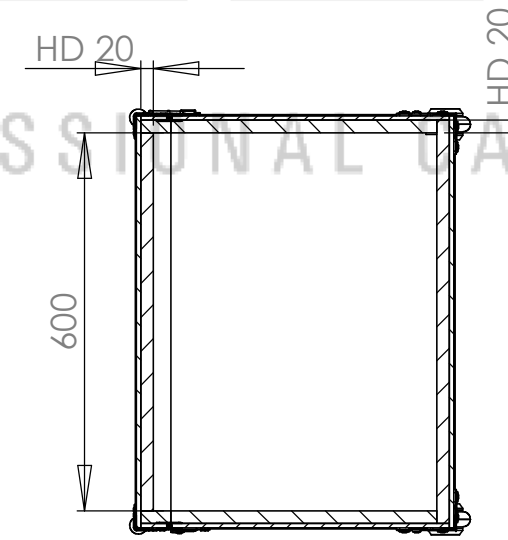
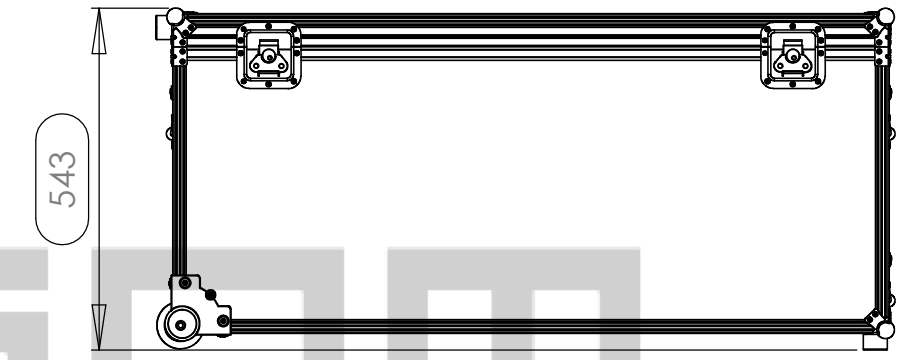
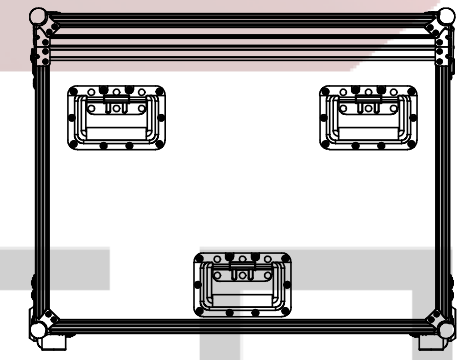
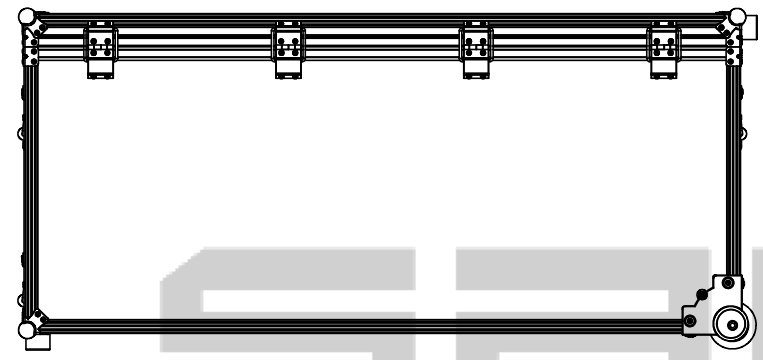
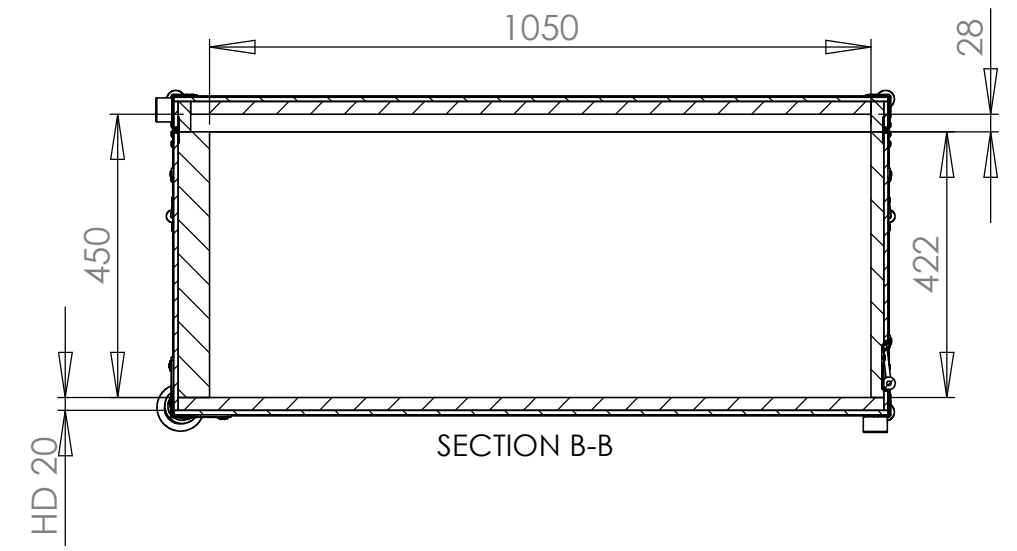
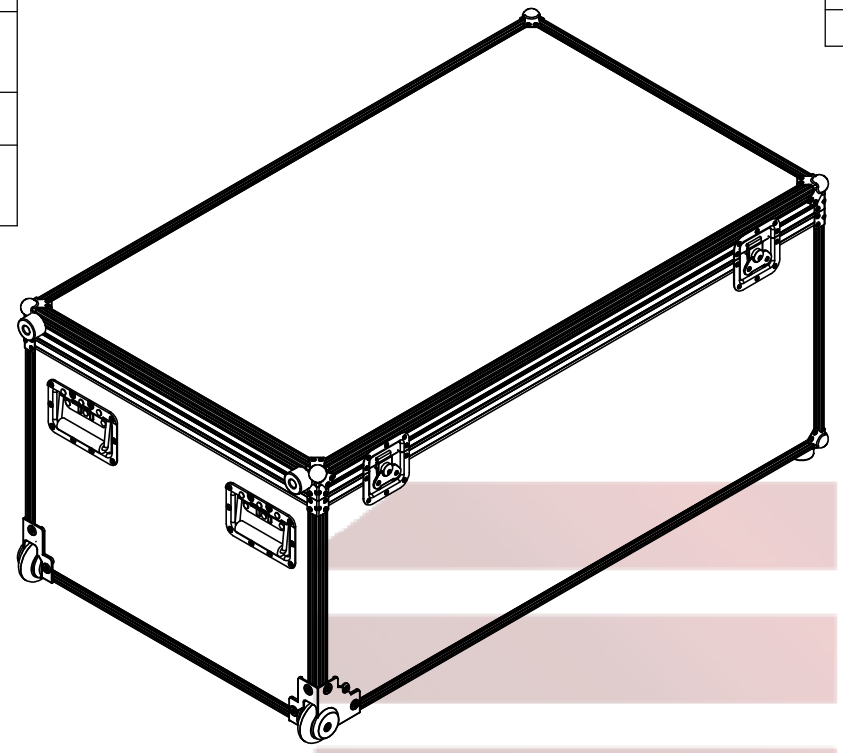


Interior dimensions		
Width	Depth	Height
1050	600	450
Weight	Approx. 25 Kg	
Wall Thickness		7mm

REVISIONS				
ZONE	REV.	DESCRIPTION	DATE	APPROVED
-	-	Final Drawing	26/07/2013	Daniel Lopes



Hardware		
Qty	Ref.	Description
8	40407	Medium corner-brace zinc plated 1,0mm
6	4112	Small ball corner - 3 leg - zinc plated
4	4911	Rubber foot 38 x 25 mm with steel insert
2	37451	Recessed Corner Castor 75mm, Die-Cast Housing
2	17290S	Key lockable medium Butterfly special
4	2524	Heavy Duty Strut Hinge, zinc plated
5	34082	Recessed sprung handle medium model

A3	This drawing must not be copied or disclosed without consent of the owner	Scale	1:12	units in mm	general tolerance	0.8mm	 PROFESSIONAL CASES
		Reference	816.131		FC, W1050XD600XH450MM RODAS DE CANTO		
Drawn by		DanielLopes	Date		26-07-2013		
1st Angle projection							