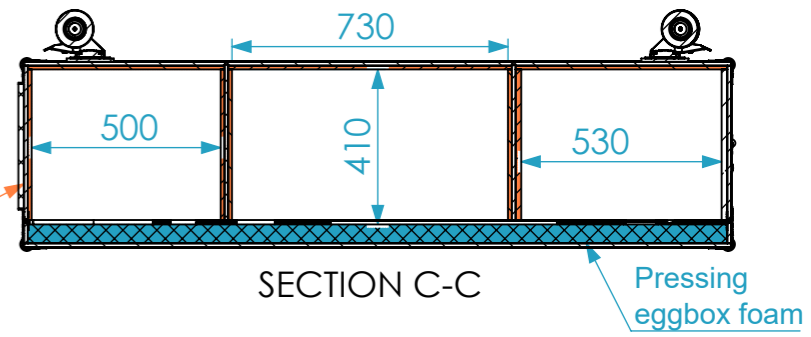
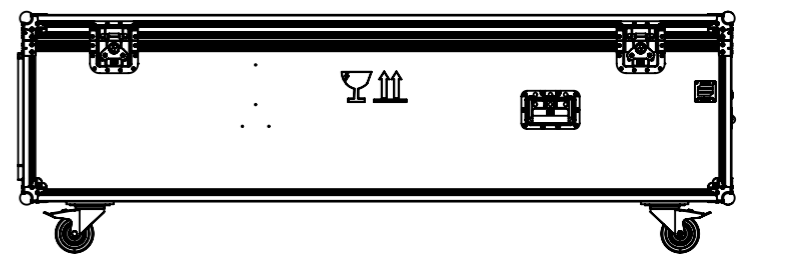
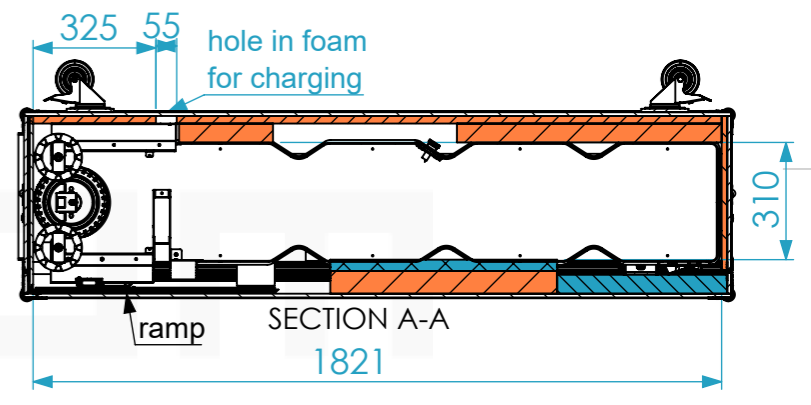
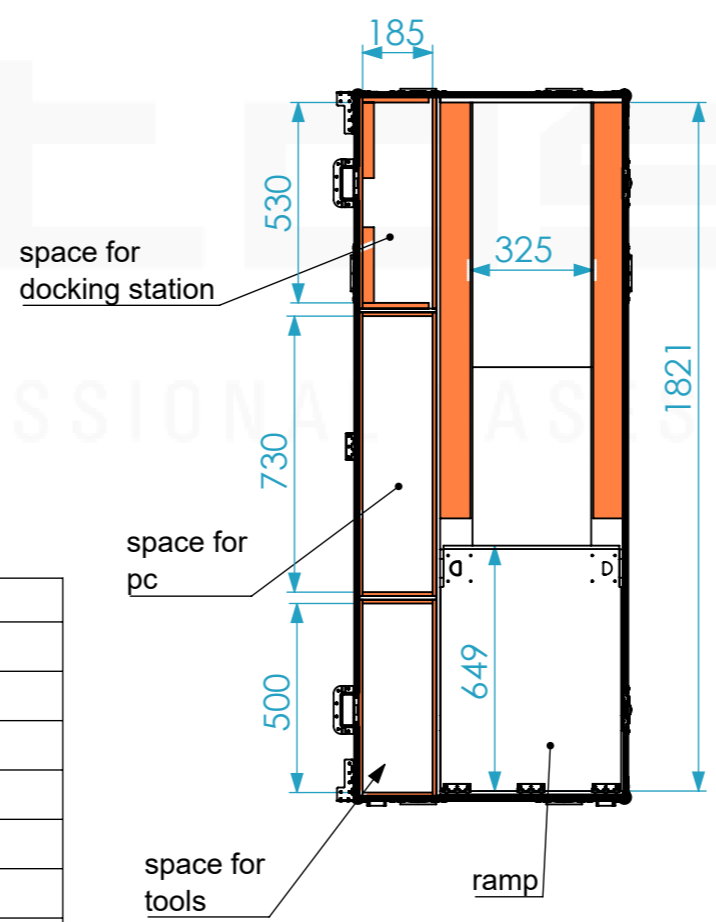
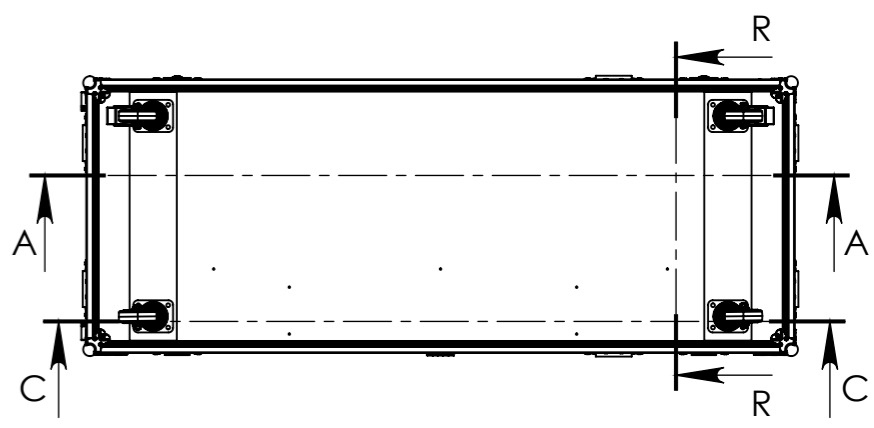
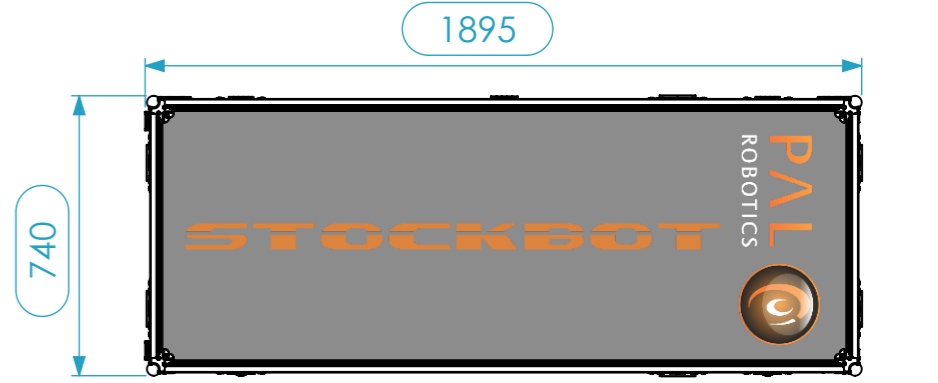
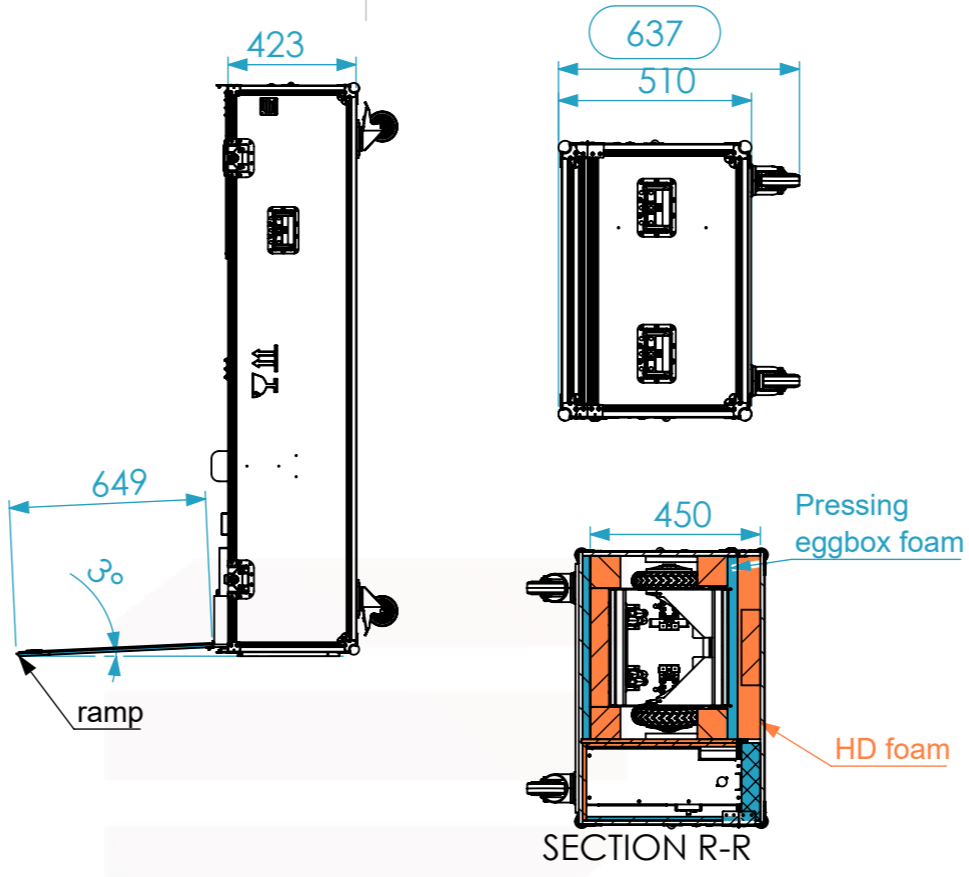
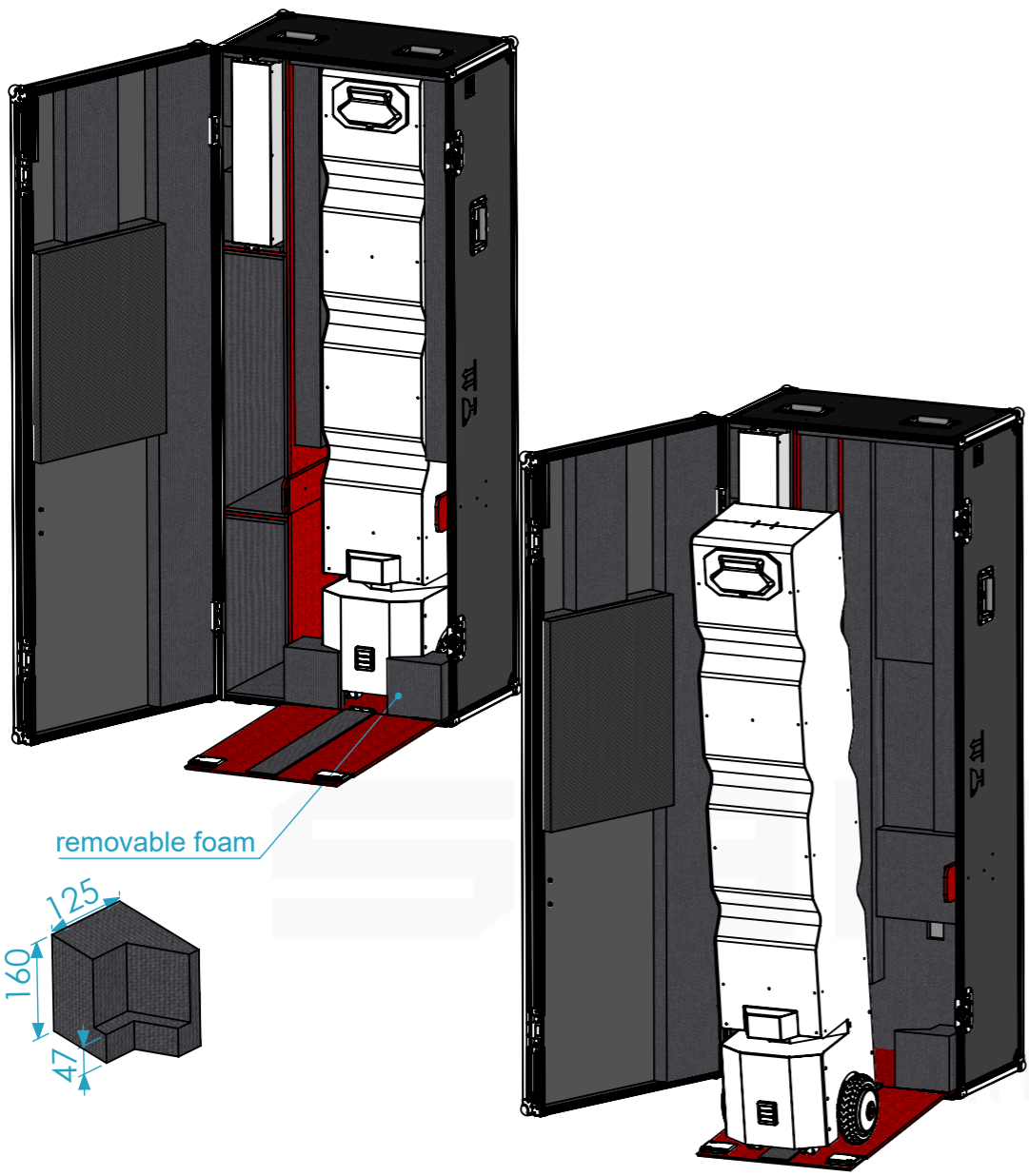


Interior dimensions		
Width	Depth	Height
1850	700	470
Weight	Approx. 49 Kg	
Wall Thickness	10mm	



Hardware		
Qty	Ref.	Description
8	410429	Heavy Duty Ball Corner
4	40403	Large corner bracket f. 35mm case angle
1	2602	Medium duty butt hinge z./p.
6	34082	Recessed Sprung Handle Medium
2	270736	Short recessed lidstay cranked
2	172531	Large butterfly V3 with 'push-back' function
3	2602	Medium duty butt hinge z./p.
2	16540	Sliding Latch System - Sliding Latch
2	RODA.100	Swivel castor Ø100 mm
2	RODA.100T	Swivel castor Ø100mm with brake

This drawing must not be copied or disclosed without consent of the owner

Drawn by	Name	Date
CatarinaDuque	CatarinaDuque	16-11-2017
Reference	1685.007	
Scale	units in mm	general tolerance
1:20	DO NOT SCALE	0.8mm
FC_PAL ROBOTICS STOCKBOT ROBOT+DOCKING STATION		

