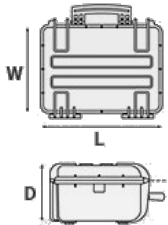


Mod. 15416 GE

COPOLYMER POLYPROPYLENE WATERPROOF CASE



Metric mm-Kg-C°



INTERNAL DIMENSIONS

L Length	1540 mm
W Width	377 mm
D Depth	160 mm
Lid	42 mm
Base	118 mm

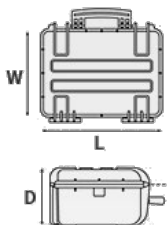
EXTERNAL DIMENSIONS

L Length	1629 mm
W Width	456 mm
D Depth	183 mm

OTHER DATA

Weight empty	11.30 Kg
Weight with foam	13.40 Kg
Weight with custom foam	0 Kg
Volume	93 lt
Buoyancy	61.60 Kg/max
Operating temperature	°C min -33 / max +90

Imperial in-lbs-F°



INTERNAL DIMENSIONS

L Length	60 5/8 in
W Width	14 13/16 in
D Depth	6 5/16 in
Lid	1 5/8 in
Base	4 5/8 in

EXTERNAL DIMENSIONS

L Length	64 1/8 in
W Width	17 15/16 in
D Depth	7 3/16 in

OTHER DATA

Weight empty	24.91 lbs
Weight with foam	29.54 lbs
Weight with custom foam	0 lbs
Volume	24.54 gal
Buoyancy	135.80 lbs/max
Operating temperature	°F min -27.4 / max +194

Mod. 15416 GE

ACCESSORIES



HANDY BACKPACK CARRYING SYSTEM FOR GUNBAGS

Practical and easy to fix kit to turn the gunbags into backpacks to safely transport your rifles.

The detachable, padded shoulder straps, clip right in the back of the gunbags D-rings.

The ergonomic straps are designed to be fully adjustable in length.

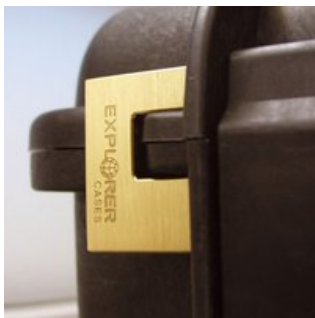
It works on GUNBAG 94, GUNBAG 114, GUNBAG 135 and GUNBAG 108.

Color: black.



PATENTED COMBINATION PADLOCK

Designed to fit snug to the Explorer case mould so as not to swing out



PATENTED HEAVY DUTY BRASS PADLOCK WITH KEYS

Designed to fit snug to the Explorer case mould so as not to swing out



TSA APPROVED PADLOCK WITH COMBINATION

The new TSA approved padlocks allow tsa® airport security agents to open the case without destroying the lock. TSA agents are trained to recognize the travel sentry certified logo and should not break the case lock.

FOAM SET FOR CASE 15416

FOAM SET FOR CASE 15416



BLIND INSERT

Kit includes 6 pcs.

Whenever the slots are not going to be used for in-built applications, those can be closed by blind inserts that will give the case a better and finished interior look.



METAL BRACKET

Kit includes 6 pcs.

All models (except for the 1908) are internally equipped with specific slots, to apply the optional metal or plastic brackets which provide either a panel's fixing points or a fix mechanical joint inside the case, to build more complete applications. This way the case becomes a real workstation, rather than just a carrying container. As the panel mounting brackets are mechanically fixed by screws, they can be removed when necessary. The dedicated screws allow the case to remain waterproof, and help the panels to be removed easily and quickly





PLASTIC BRACKET

Kit includes 6 pcs.

All models (except for the 1908) are internally equipped with specific slots, to apply the optional metal or plastic brackets which provide either a panel's fixing points or a fix mechanical joint inside the case, to build more complete applications. This way the case becomes a real workstation, rather than just a carrying container. As the panel mounting brackets are mechanically fixed by screws, they can be removed when necessary. The dedicated screws allow the case to remain waterproof, and help the panels to be removed easily and quickly



CONVOLUTED FOAM SET

LIDFOAM.154 - CONVOLUTED FOAM SET FOR CASE 15416 (includes 2 pcs.)



PROTECTIVE SLEEVE FOR PC 13"-13.3"

Protective padded notebook sleeve. Protects the laptop from shocks and scratches.

FEATURES





Internal slots for optional panel mounting brackets or panel mounting rings



(from model 3818 on)



(Art. NEOSEAL + nr. art.)



(Art. LABELCOVER + nr. art.)



Automatic pressure release valve.